

AD

T-7

A-1

OUTER EDGE OF SOUTHERLY DIKE

25-10

30-2

30-3

29-6

SEVEN LAKES DRIVE

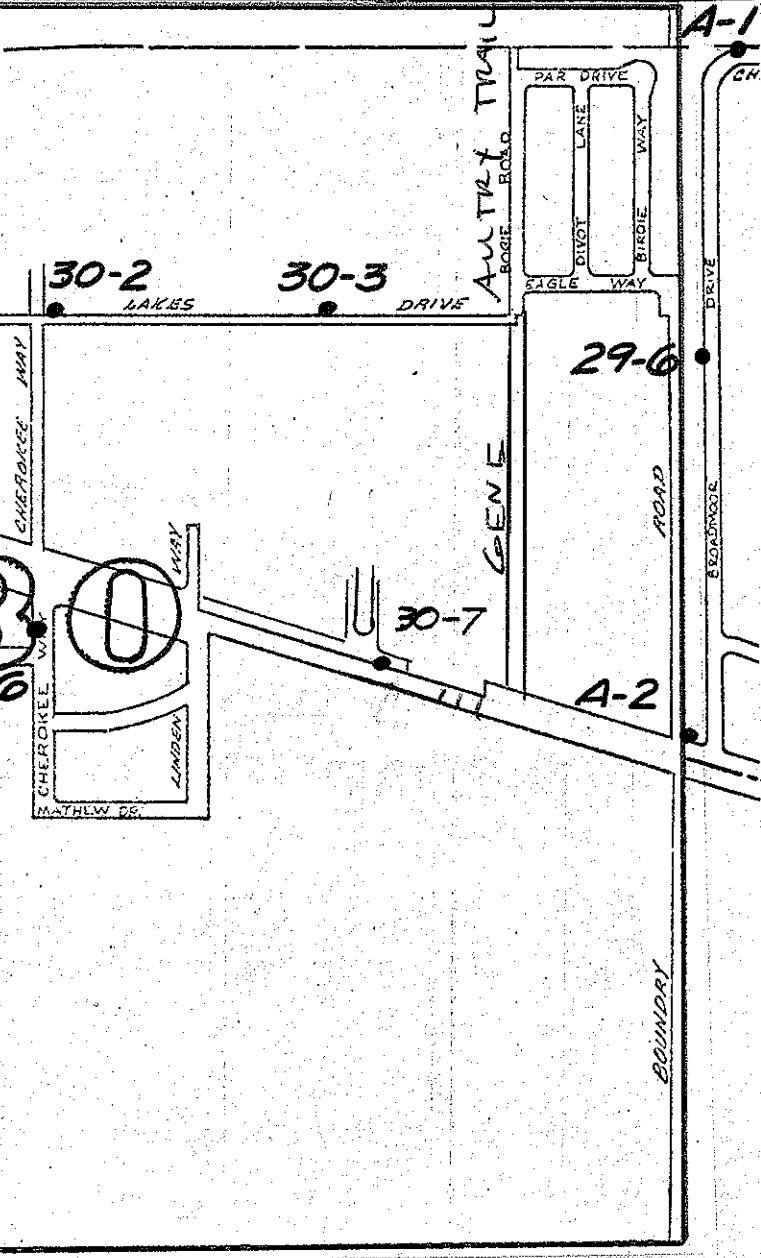
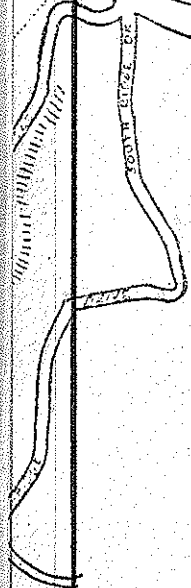
HWY

30-5

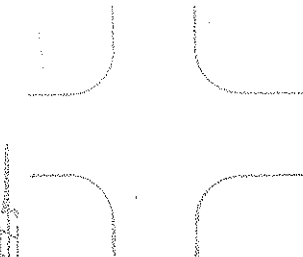
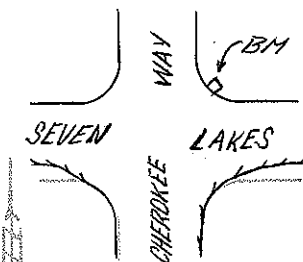
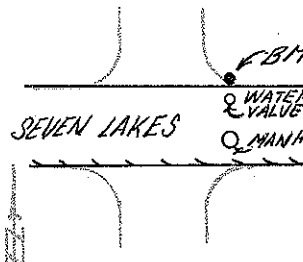
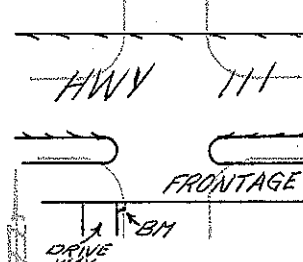
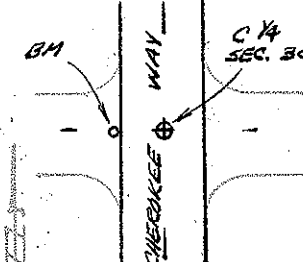
30

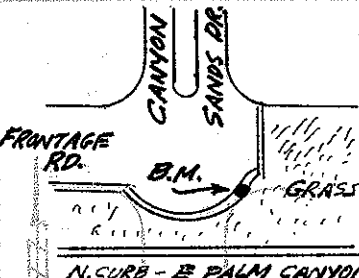
30-7

A-2



SECTION 30

LOCATION	DESCRIPTION	ELEVATION	BENCHMARK
	See Section 19 See Section 29 See Section 25 See Section 29 See Section 29		T-7 A-1 25-10 A-2 29-6
	Chisled Box N.E. M.O.C. Seven Lakes and Cherokee Way BENCH MARK DESTROYED	359.648	30-2
	Nail set in North curb Seven Lakes 15' North of S.M.H. near Res. No. 92 BENCH MARK DESTROYED	349.942	30-3
	Chisled Box cut on T.C. 30' South of Ford Motor Company PL next to D/W	360.582	30-5
	2" BRONZE DISC STAMPED "C.P.S. B.M. A-6 RESET 1975" SET IN TOP OF W. CURB OF CHEROKEE WAY APP. C 1/4 SEC. 30. RESET MAY 1975	354.176	A-6

LOCATION	DESCRIPTION	ELEVATION	BENCHMARK
	<p>2" Bronze disc stamped "C.P.S. B.M. 30-7". Set in top of curb at south side of frontage road along E. Palm Canyon Dr., east of entrance to "CANYON SANDS" condominiums.</p>	<p>342.639</p>	<p>30-7</p>
