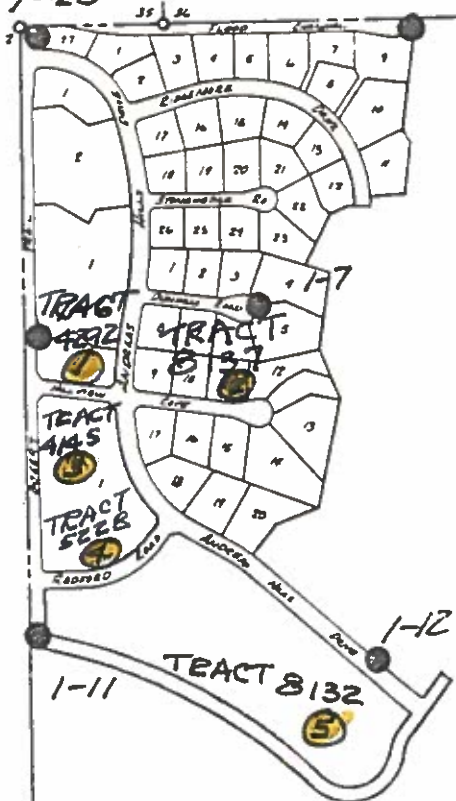
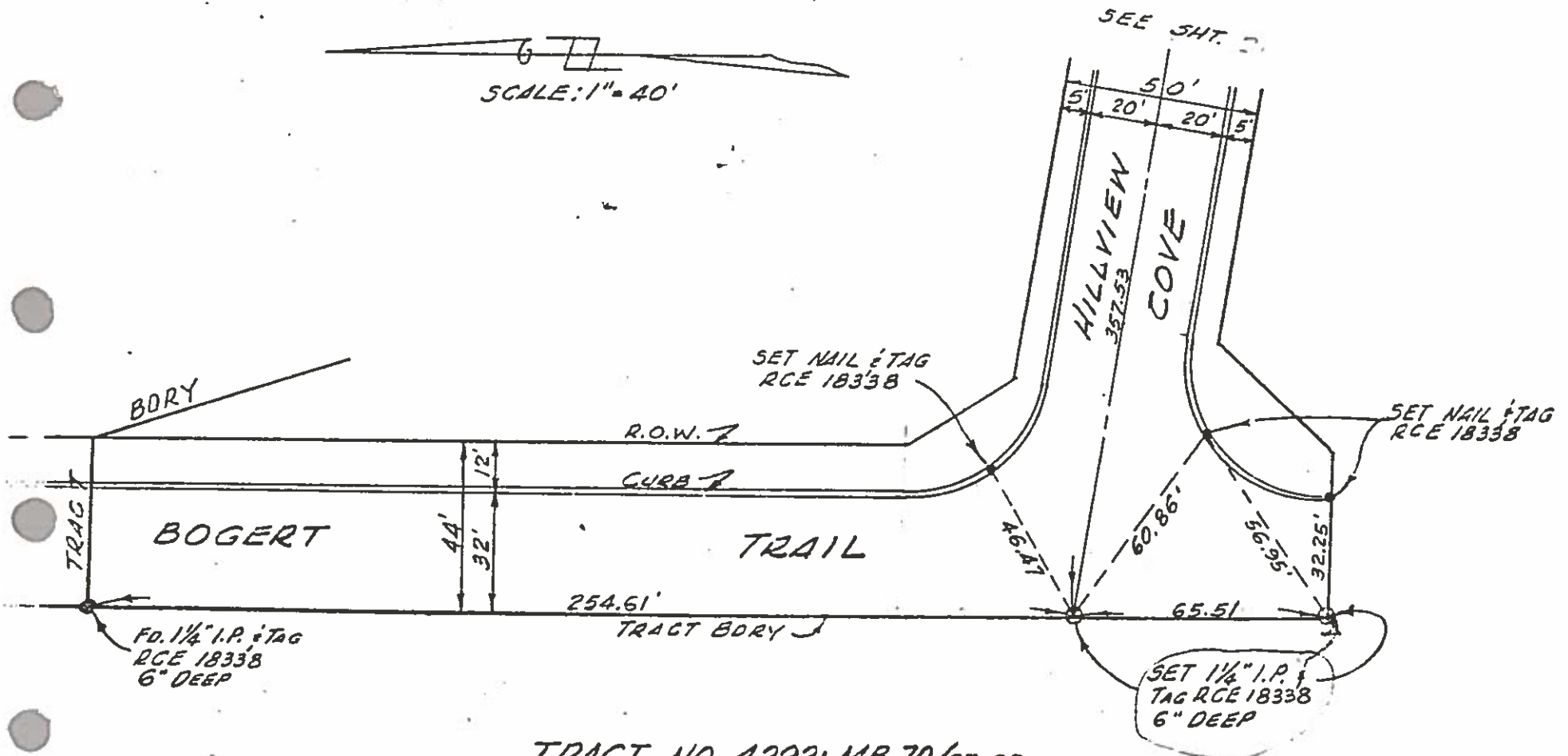
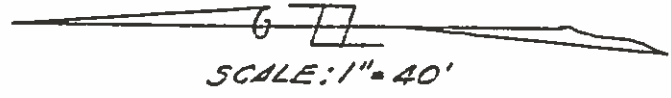


T-20

1-2

SEC. 1, T.5S., R.4E.

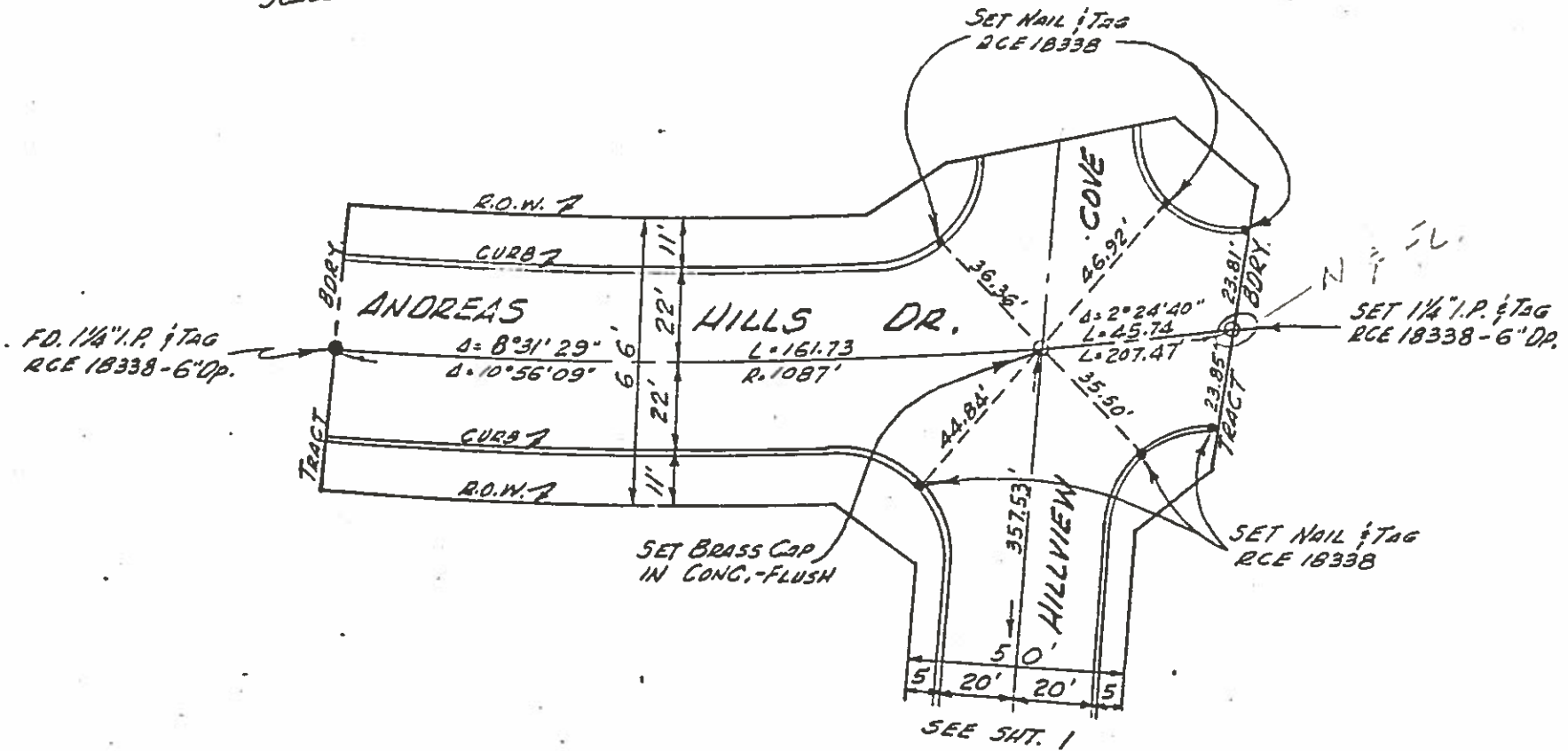




TRACT NO. 4292; M.B. 70/37, 98
CENTERLINE TIES

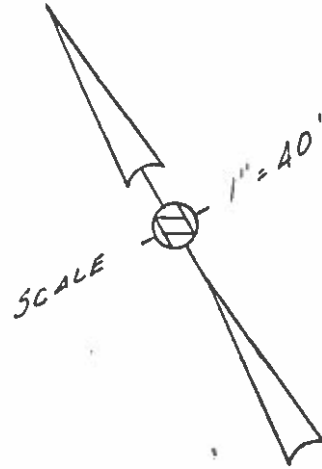
OCT. 27, 1972
 KWL ASSOCIATES
 37153 FERBER DR.
 CATHEDRAL CITY
 TELE: 328-2913

SCALE: 1"=40'

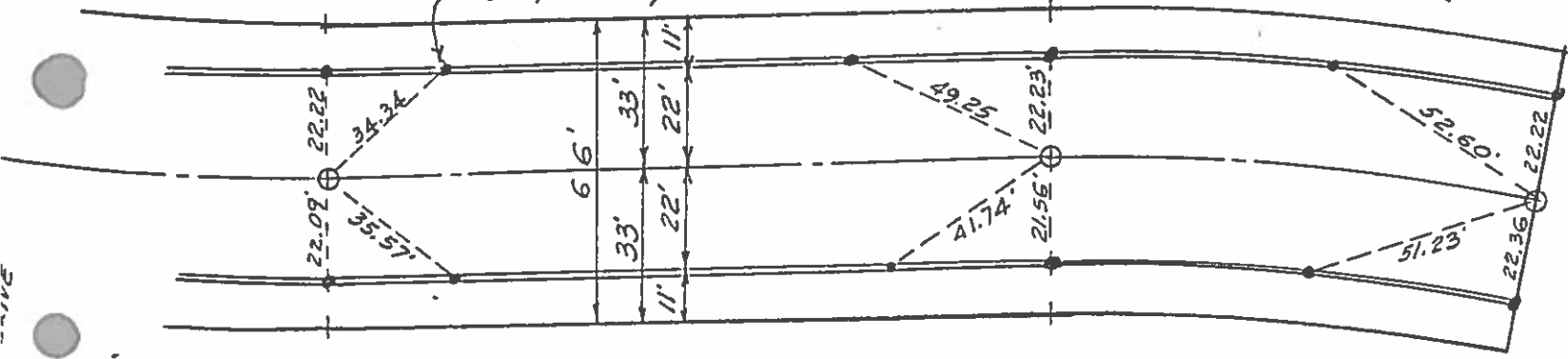


TRACT NO. 4292

SECI



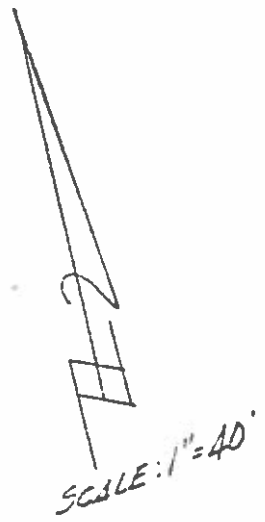
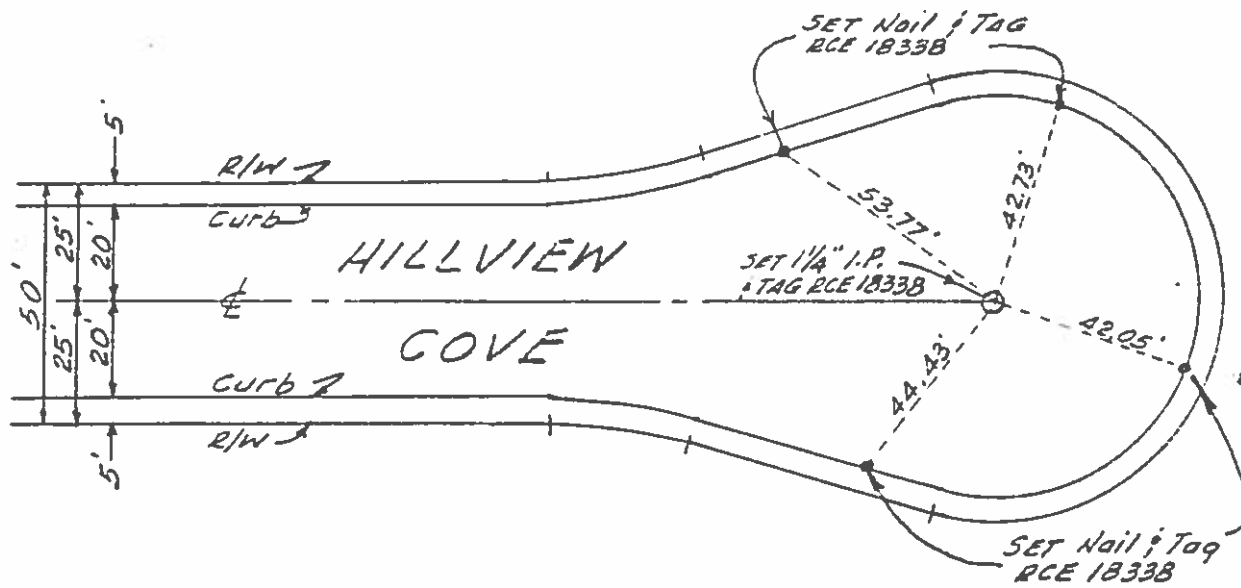
SET NAIL & TAG RCE 18338, TYPICAL



TRACT NO. 8137

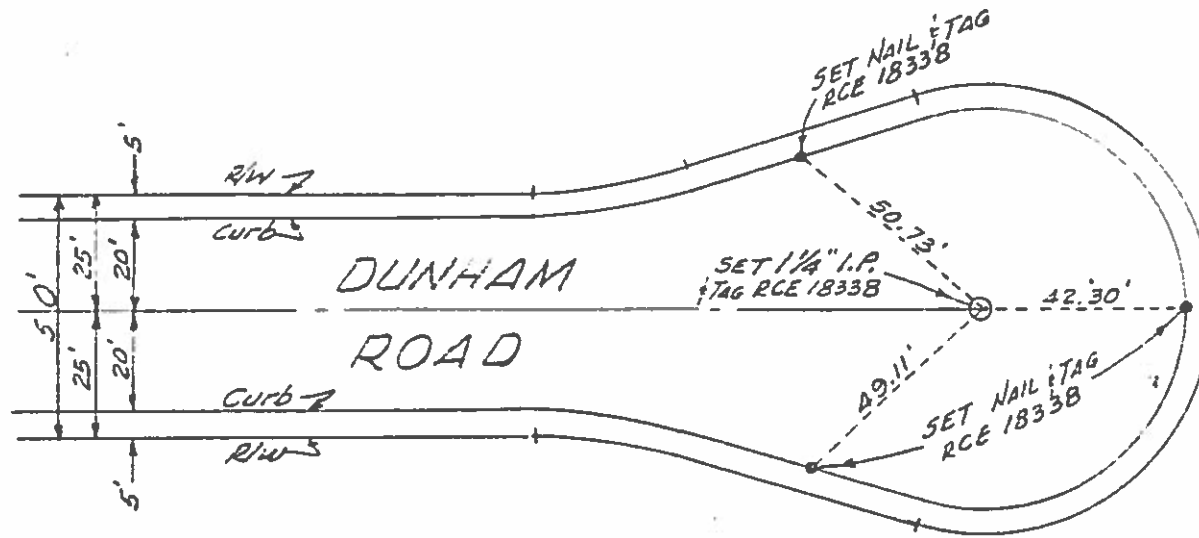
CENTERLINE TIES

KWL ASSOCIATES



TRACT NO. 8137
CENTERLINE TIES

TRAVEL
 TOWEL
 ASSOCIATES
 ENGINEERS, ARCHITECTS, & SURVEYORS
 1111 1/2 E. 10th Ave. Suite 100
 Denver, CO 80202

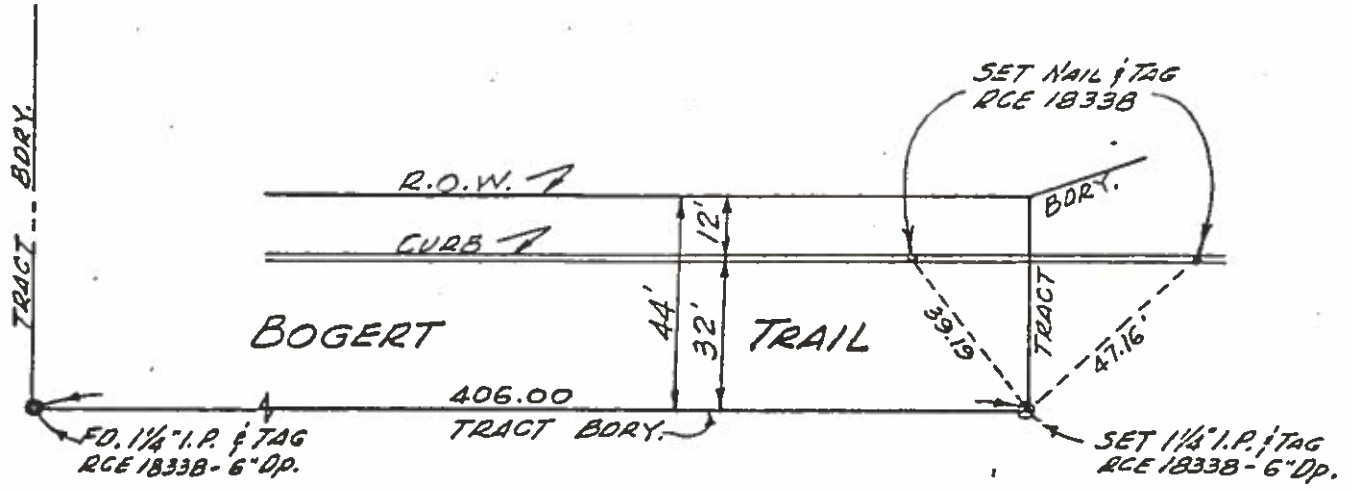
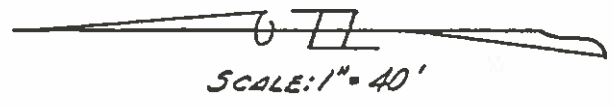


SCALE: 1" = 40'

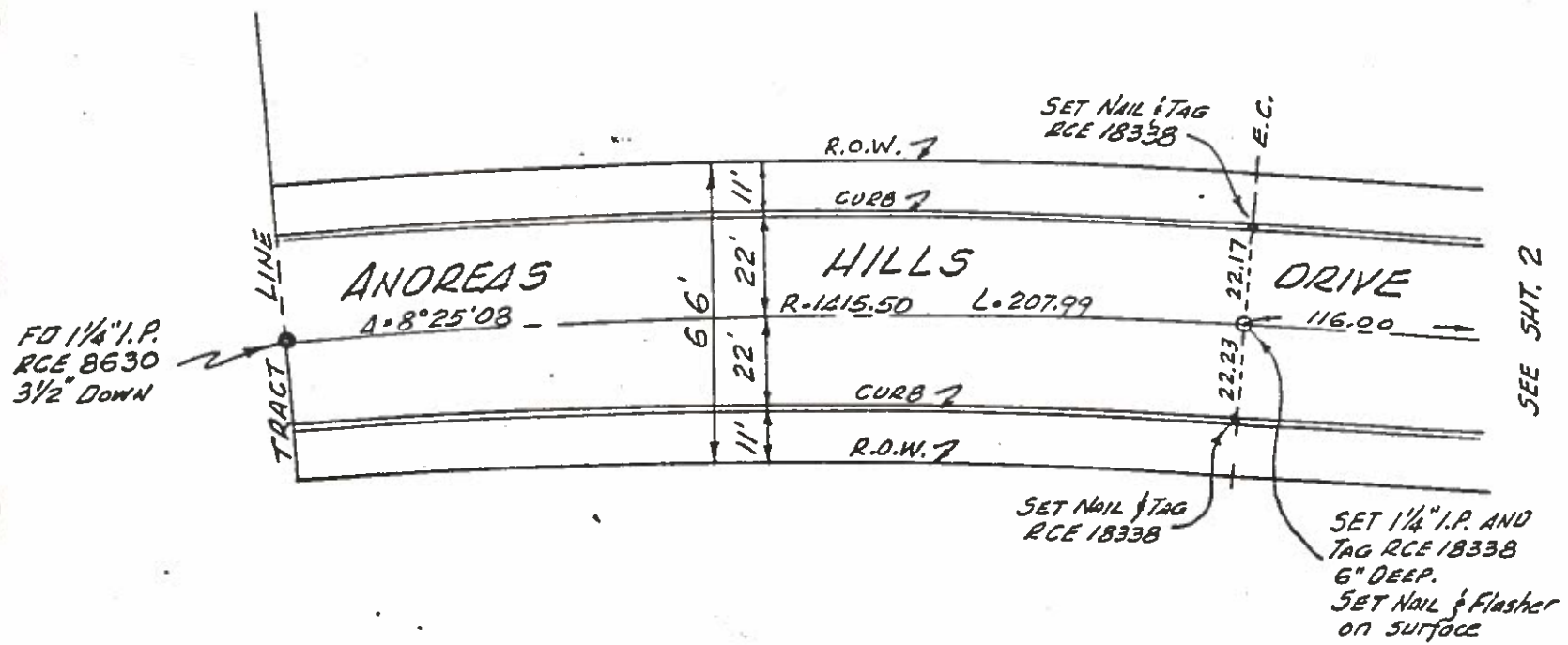
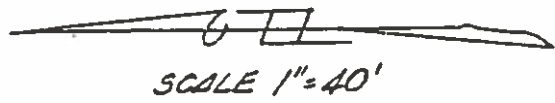
TRACT NO. 8137

CENTERLINE TIES

KWL ASSOCIATES

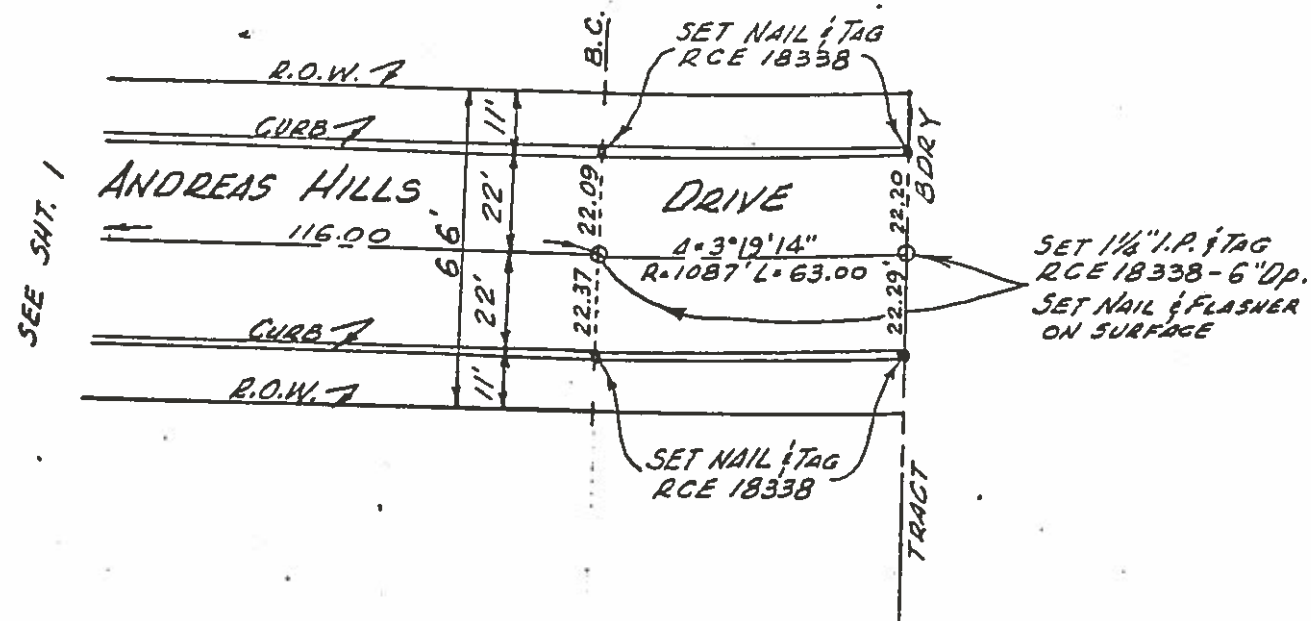
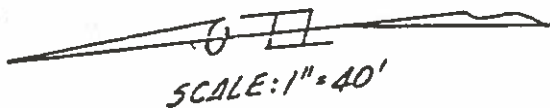


TRACT NO. 4145



TRACT NO. 4145; M.B. 70/35, 36
CENTERLINE TIES
 OCT. 27, 1972

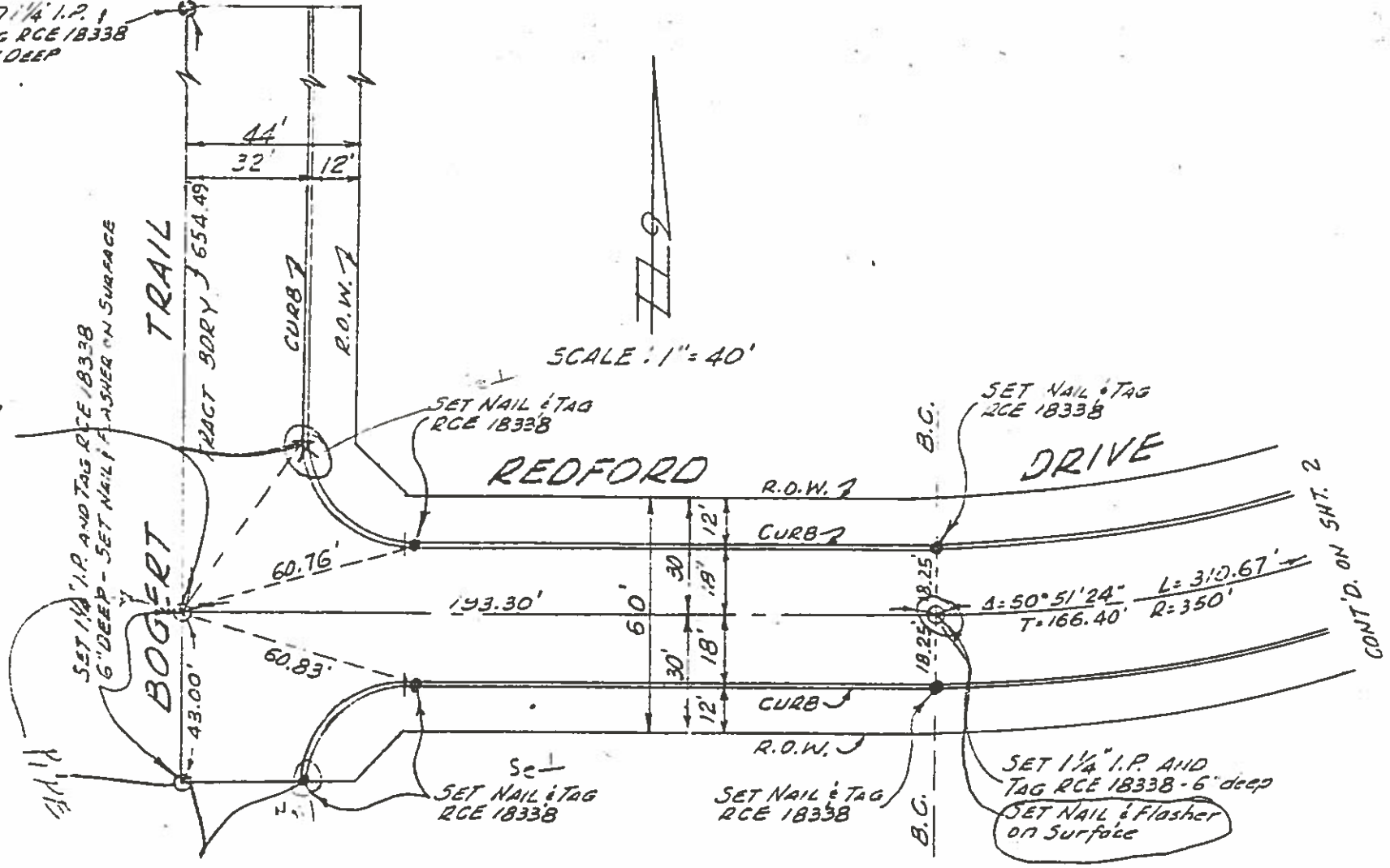
KWL ASSOCIATES
 37153 FERBER DR.
 CATHEDRAL CITY
 TELE: 328-2913



TRACT NO. 4145

FD 1 1/4" I.P. 1
TAG RCE 18338
6" DEEP

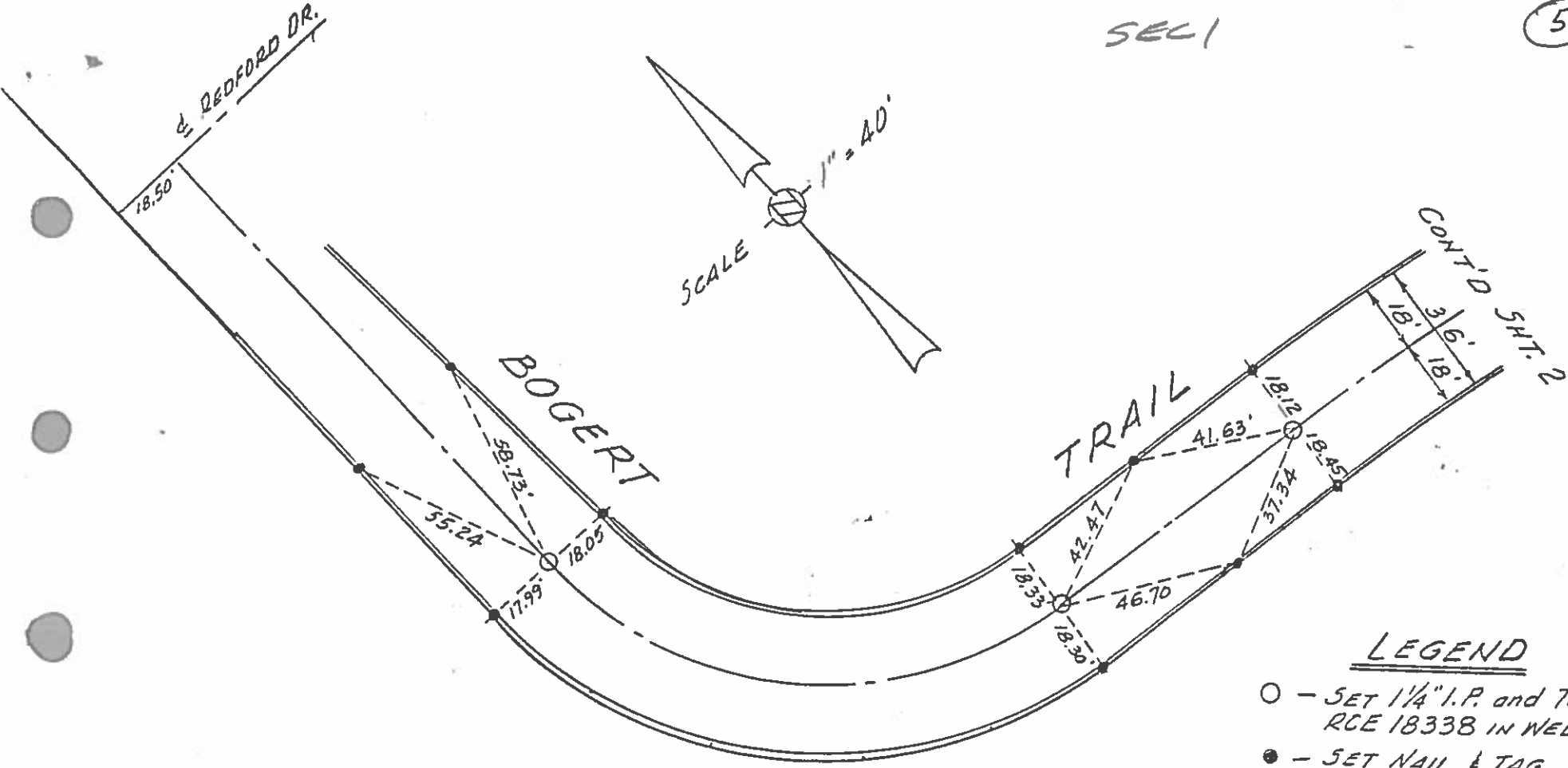
53.87



82°22'

TRACT NO. 5228; MB 79/74, 75
CENTERLINE TIES

KWL ASSOCIATES
Planning • Engineering • Surveys
PALMS TO PINES PLAZA
72-811 HWY. 111-SUITE 204
PALM DESERT, CALIF. 92260

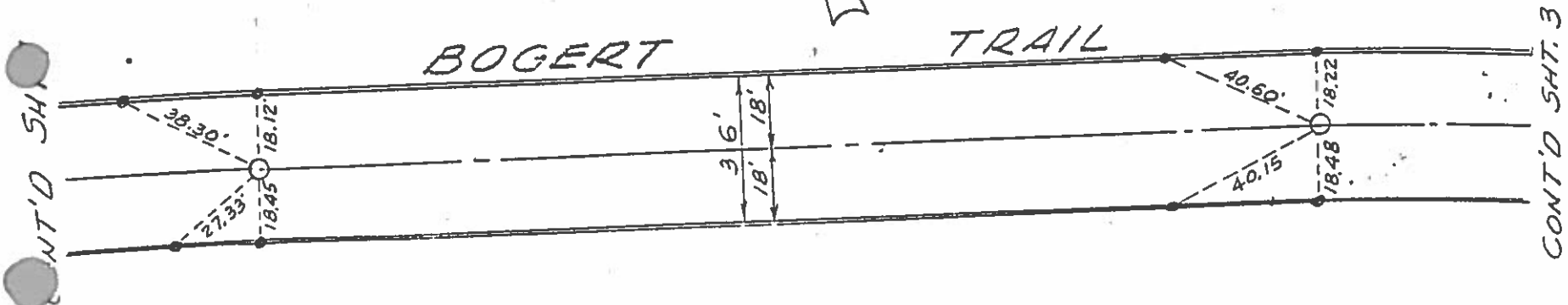


LEGEND

- - SET 1/4" I.P. and Tag RCE 18338 IN WELL
- - SET NAIL & TAG RCE 18338 IN CURB

TRACT NO. 8132
CENTERLINE TIES

KWL ASSOCIATES
 712 Eugene Road
 PALM SPRINGS, CA 92262
 (714) 327-7786



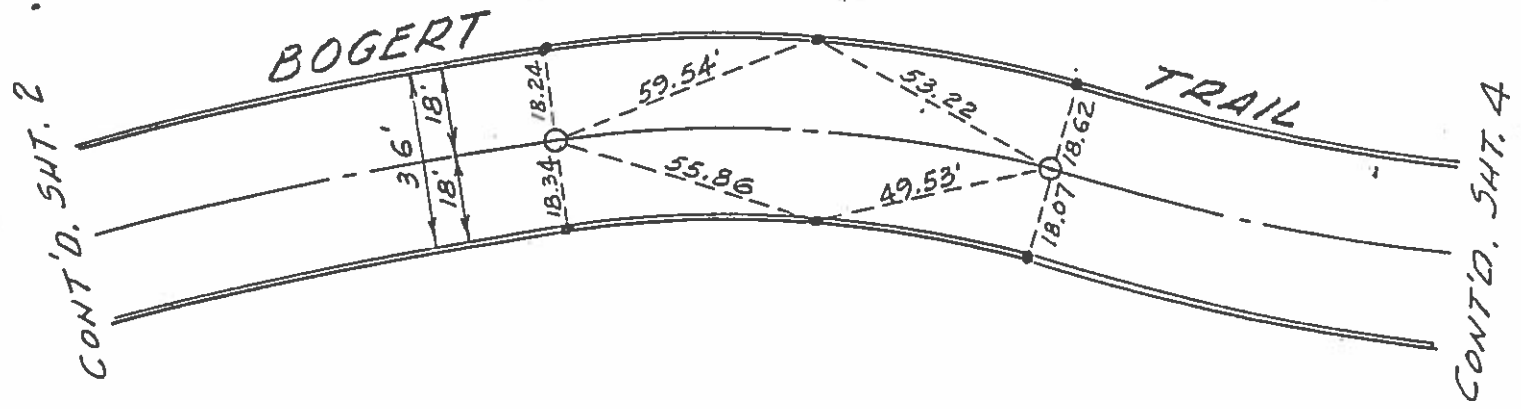
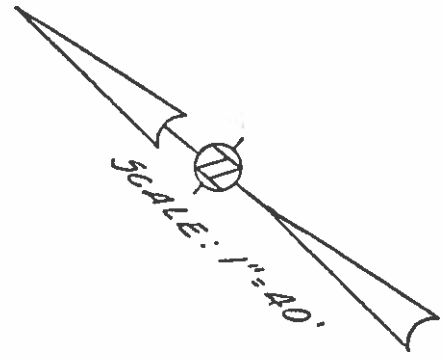
LEGEND

- - SET 1 1/4" I.P AND TAG
RCE 18338 IN WELL
- - SET NAIL & TAG
RCE 18338 IN CURB

TRACT NO. 8132

CENTERLINE TIES

KWL ASSOCIATES
 712 Eugene Road
 PALM SPRINGS, CA 92262
 (714) 327-7786



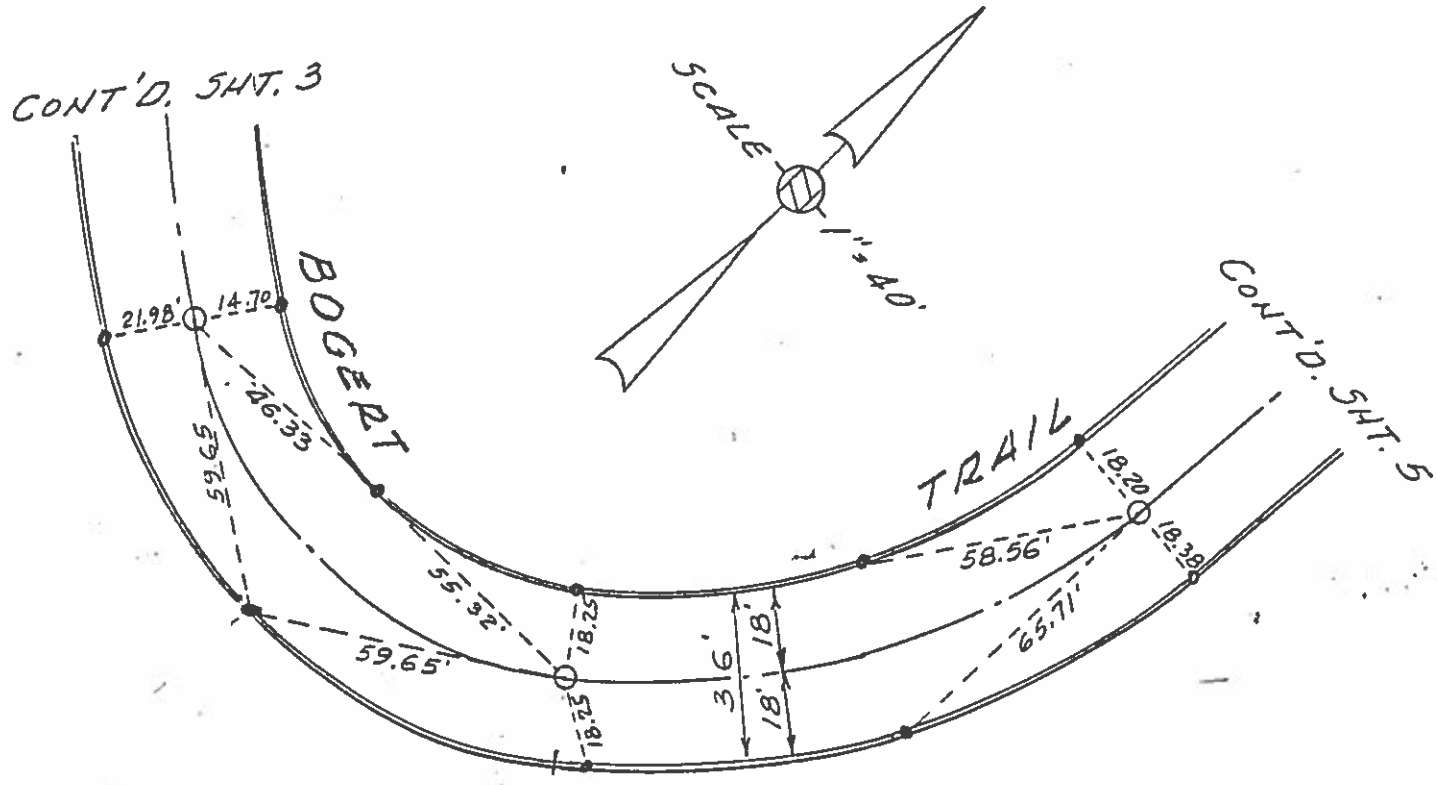
LEGEND

- - SET 1/4" I.P. AND TAG
RCE 18338 IN WELL
- - SET NAIL & TAG
RCE 18338 IN CURB

TRACT NO. 8132

CENTERLINE TIES

KWL ASSOCIATES
 712 Eugene Road
 PALM SPRINGS, CA 92262
 (714) 327-7786



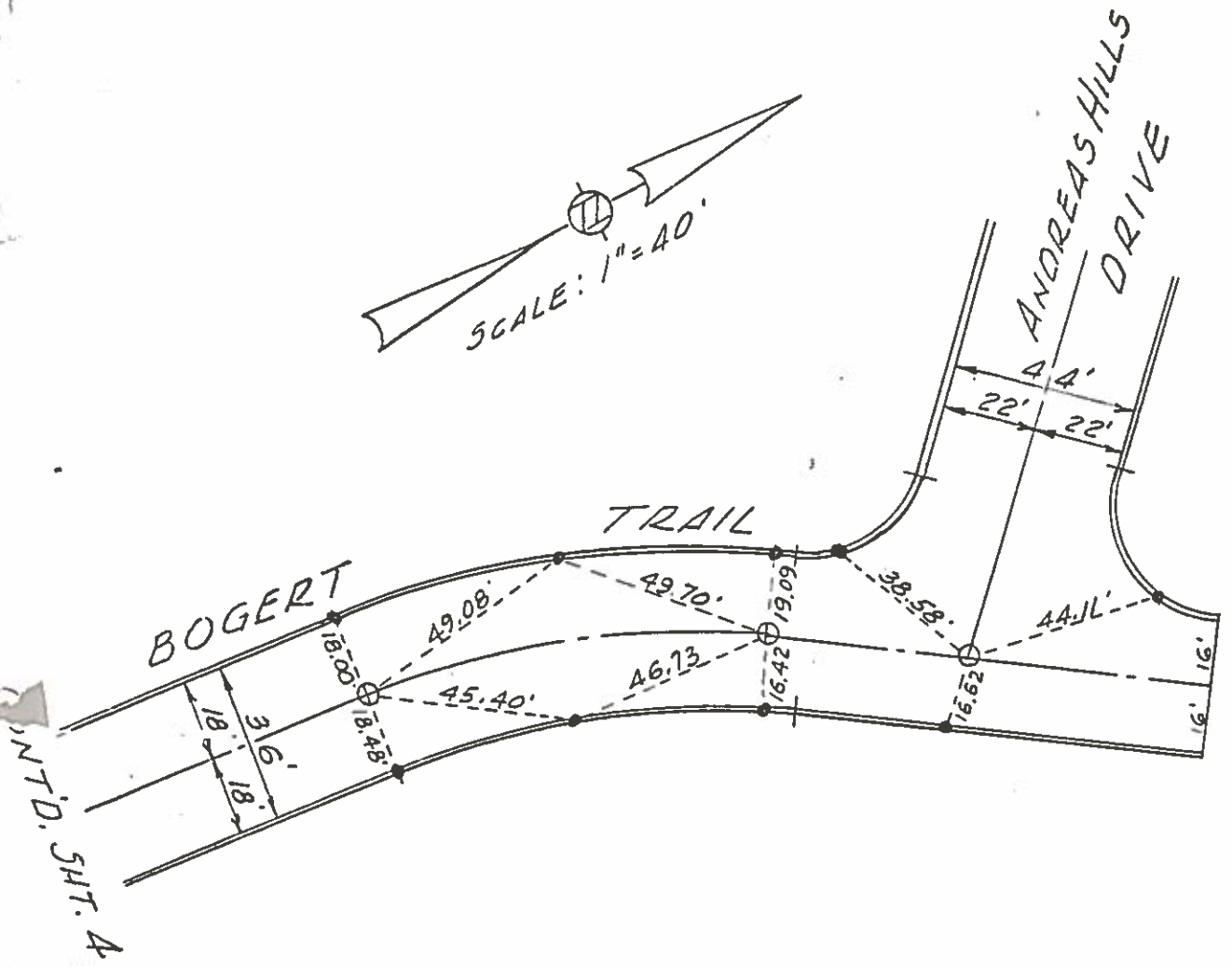
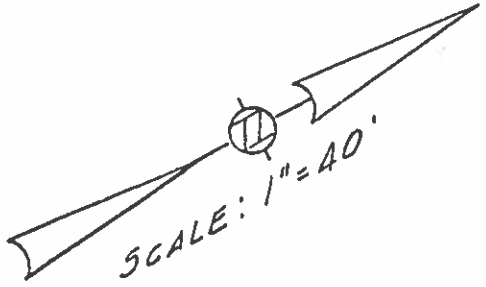
LEGEND

- - SET 1 1/4" I.P. AND TAG
RCE 1833B IN WELL
- - SET NAIL & TAG
RCE 1833B IN CURB

TRACT NO. 8132

CENTERLINE TIES

KWL ASSOCIATES
 712 Eugene Road
 PALM SPRINGS, CA 92262
 (714) 327-7786



LEGEND

- - SET 1/4" I.P. AND TAG
RCE 18338 IN WELL
- - SET NAIL & TAG
RCE 18338 IN CURB

TRACT NO. 8132

CENTERLINE TIES

KWL ASSOCIATES
 712 Eugene Road
 PALM SPRINGS, CA 92262
 (714) 327-7786