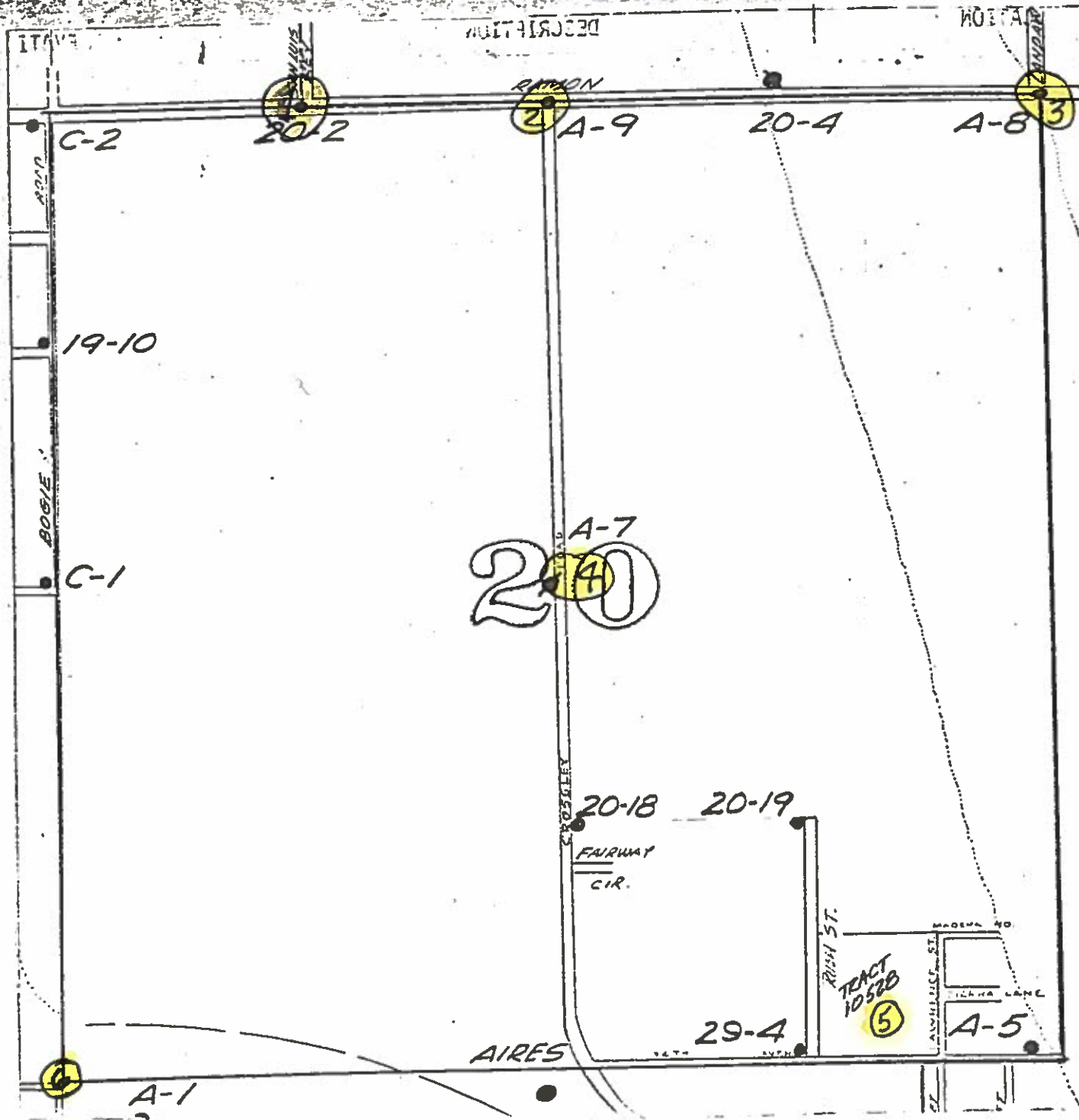


REVISIONS



DESCRIPTION

SECTION

1700

1800

1900

2000

RIMON

1700

A-7

20-18

20-19

FAIRWAY

C.R.

RISH ST.

MADAMA RD.

LAWRENCE ST.

TIKHA LANE

AIRS

29-4

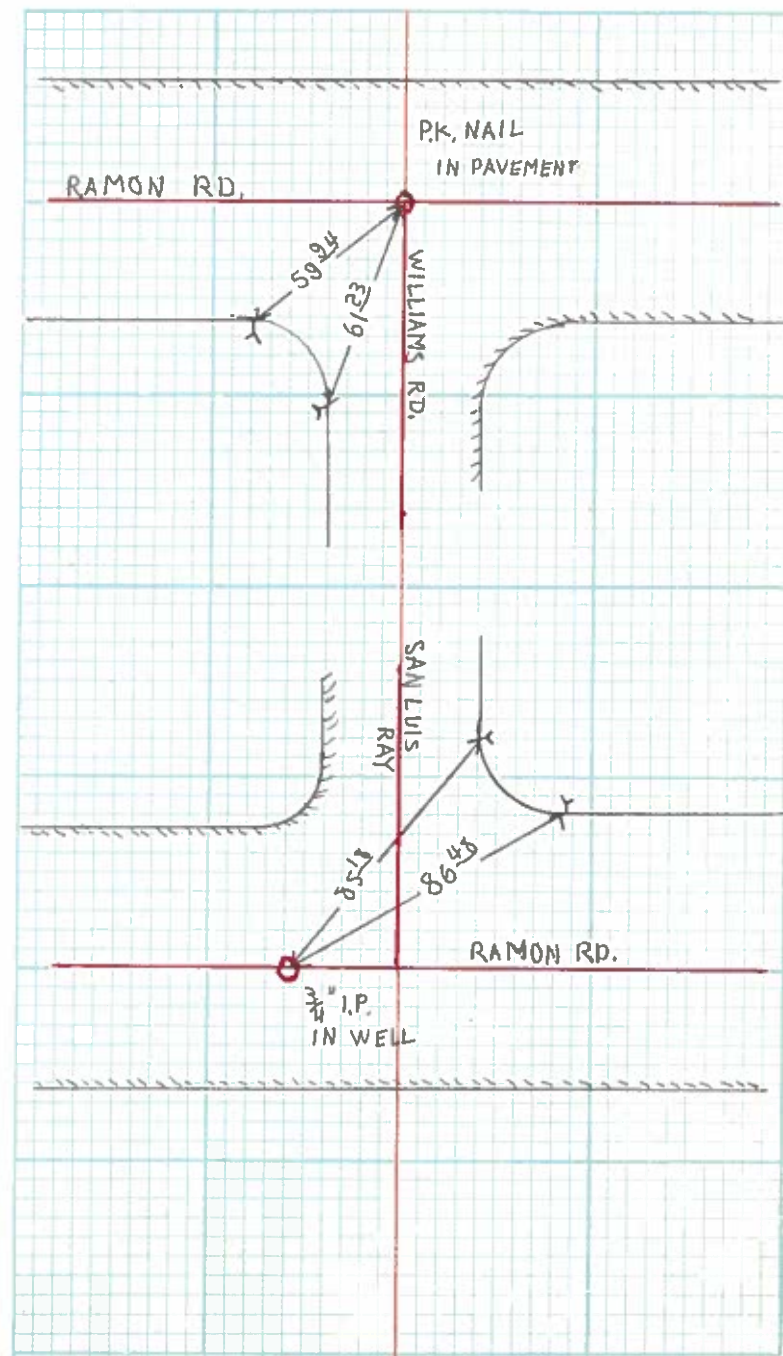
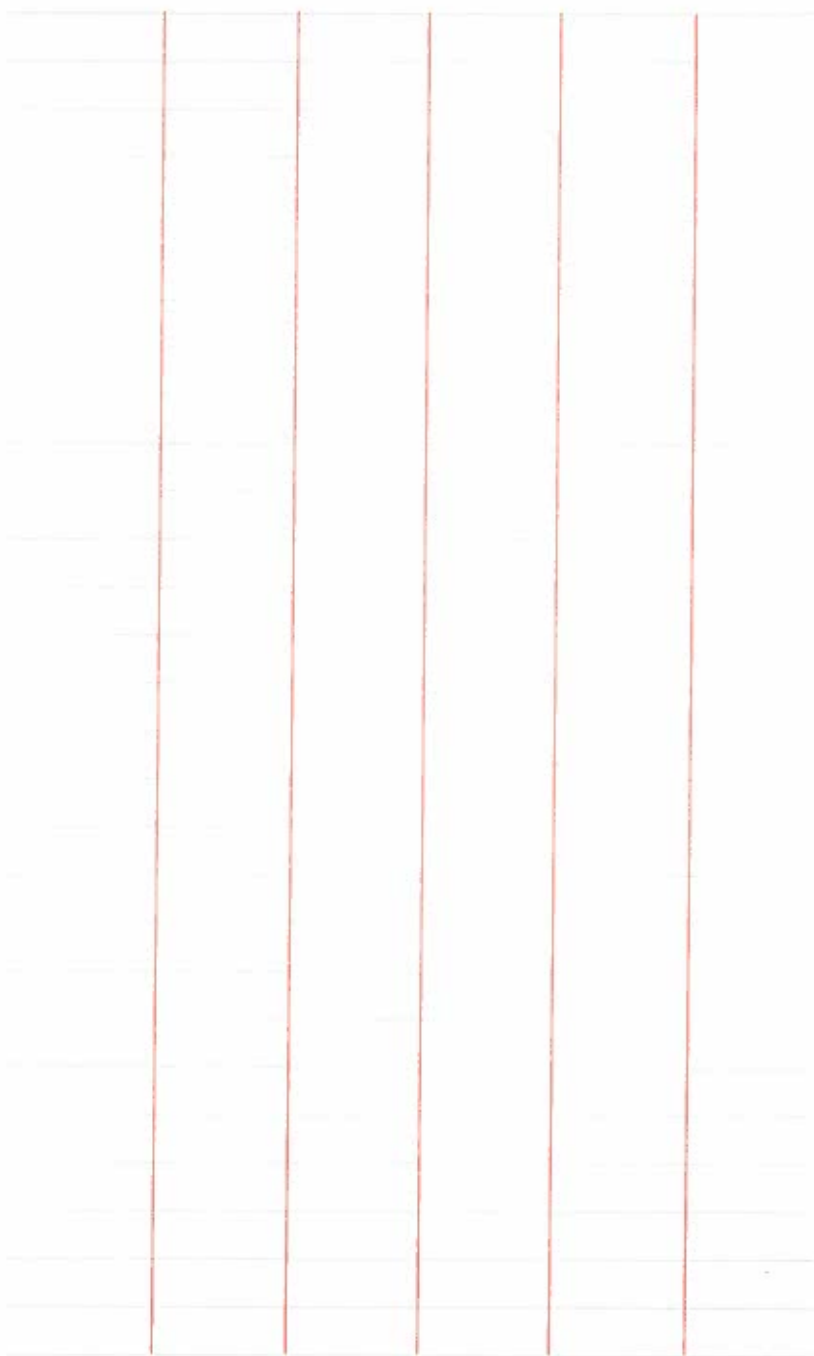
A-1

A-5

Survey of RAMON RD. MONUMENTS  
Classification TIES  
Survey by \_\_\_\_\_

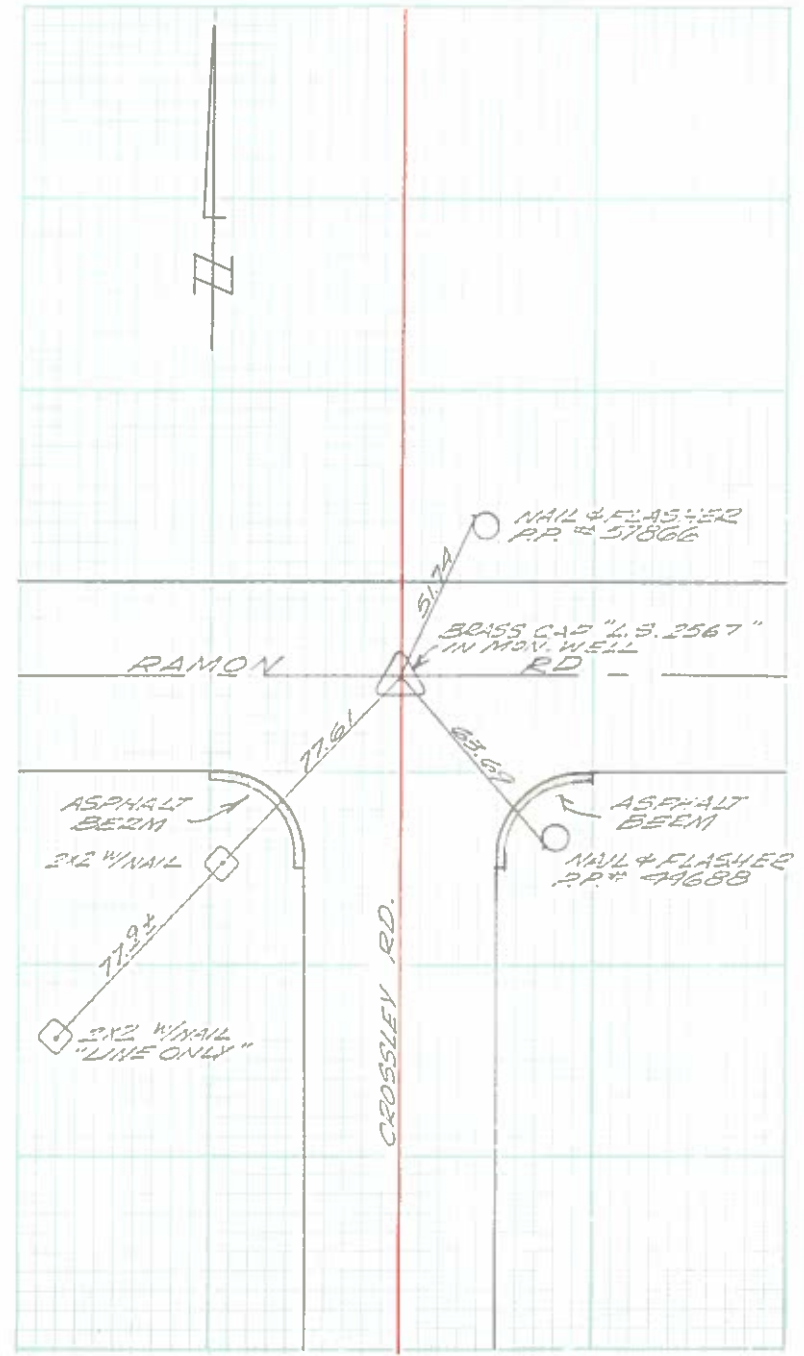
SEC 20

From Sta \_\_\_\_\_ To Sta \_\_\_\_\_  
Date JUNE 22, 1970



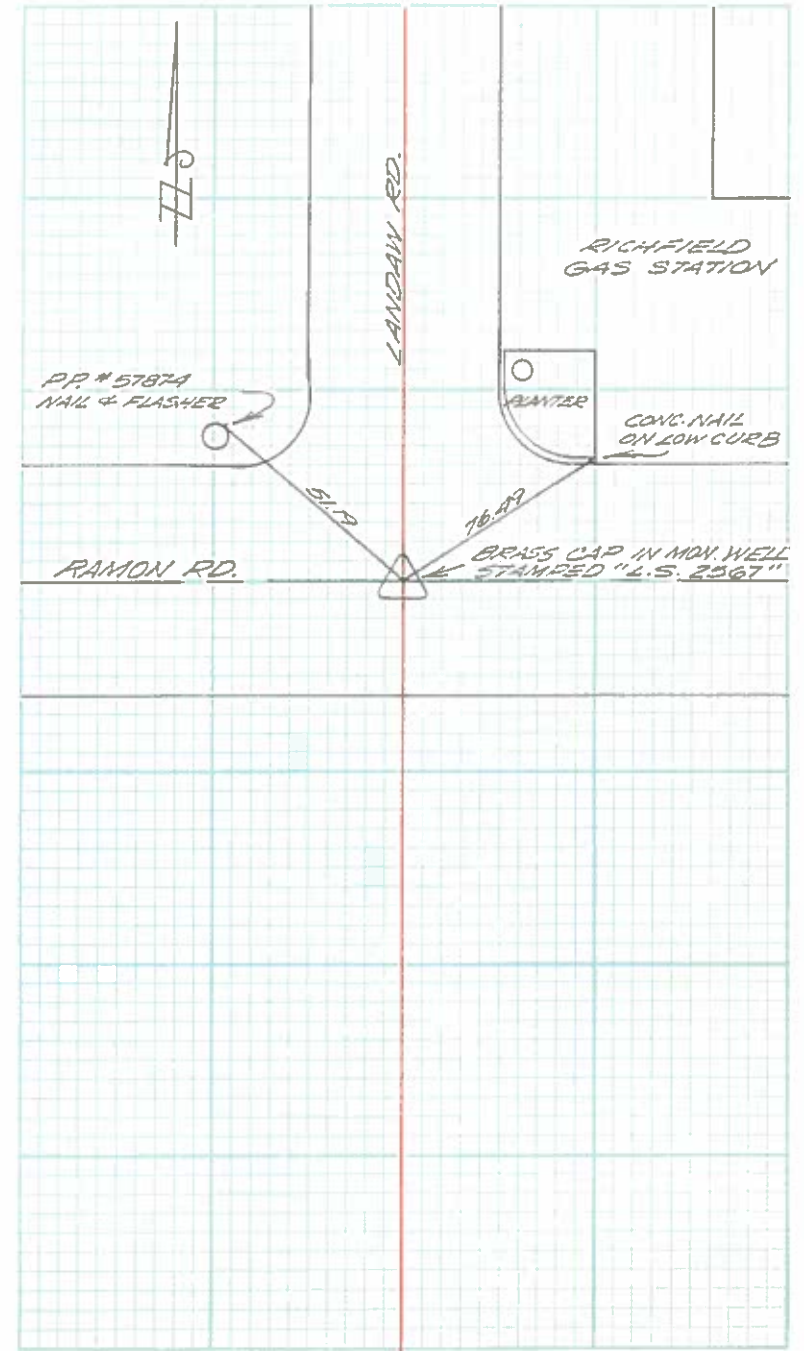
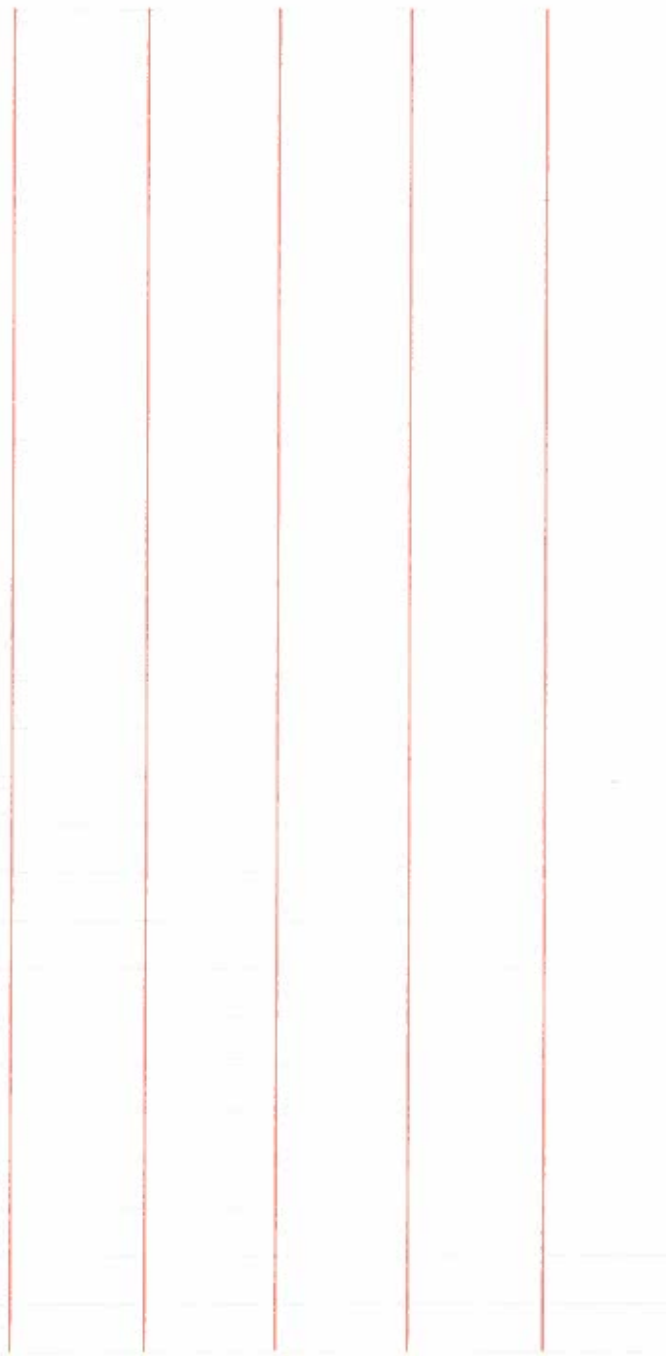
Survey of N 1/4 COR. SEC. 20 T4S-R5E  
Classification R.P.'S TO BRASS CAP  
Survey by MOHLER, MSHAYON, PETACH, SHUMAN, WHITE

From Sta \_\_\_\_\_ To Sta \_\_\_\_\_  
Date 3-4-70



Survey of N.E. CORN. SEC. 20 R5E-74S  
Classification R.P.S TO BRASS CAP  
Survey by MOHLER, PETACH, SHUMAN

From Sta \_\_\_\_\_ To Sta. \_\_\_\_\_  
Date 2-25-70

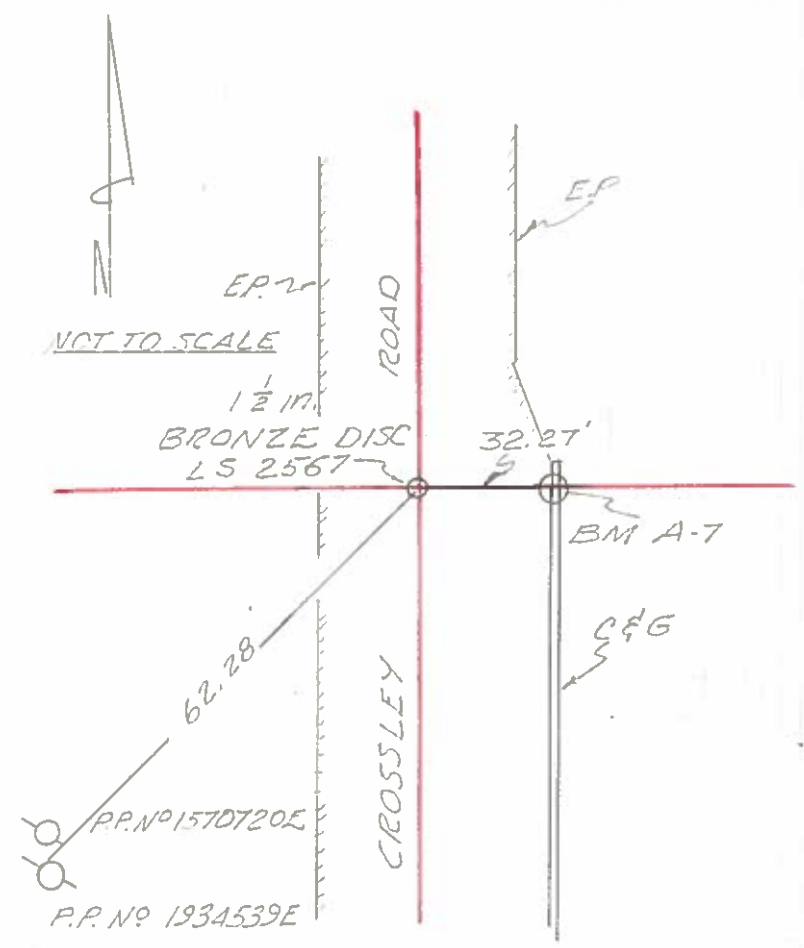


CITY OF PALM SPRINGS  
PUBLIC WORKS DEPARTMENT

# ~~2~~ (4)

Survey of Section 20 T4S, R5E  
Classification TIES  
Survey by Cole, Petach, Maxwell

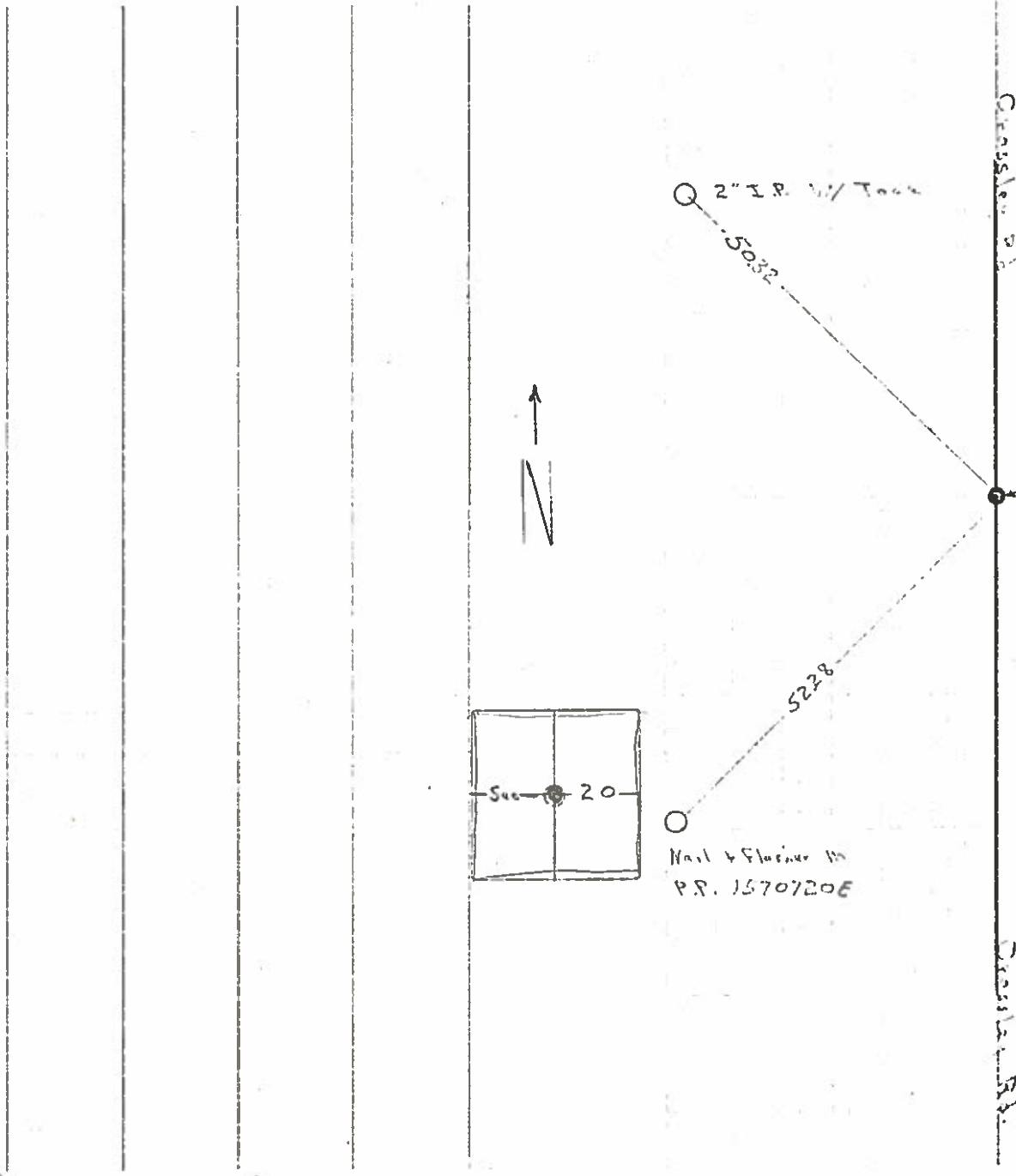
From Sta \_\_\_\_\_ To Sta \_\_\_\_\_  
Date 27 July 1973





Survey of Sec 20 C-1/4 Cor Sec 20  
Classification Ties T-4-S-R-S-E  
Survey by \_\_\_\_\_

From Sta \_\_\_\_\_ To Sta \_\_\_\_\_  
Date 23 Feb 1972





# ERVIN ENGINEERING

CIVIL ENGINEERS • LAND PLANNERS • CONSULTANTS

A DIVISION OF ERVIN, GHORMLEY, JOHNSON & ASSOCIATES  
LOS ANGELES • NEWPORT BEACH • CAMARILLO • INDIO • GROVER CITY

SHEET 1 OF 5

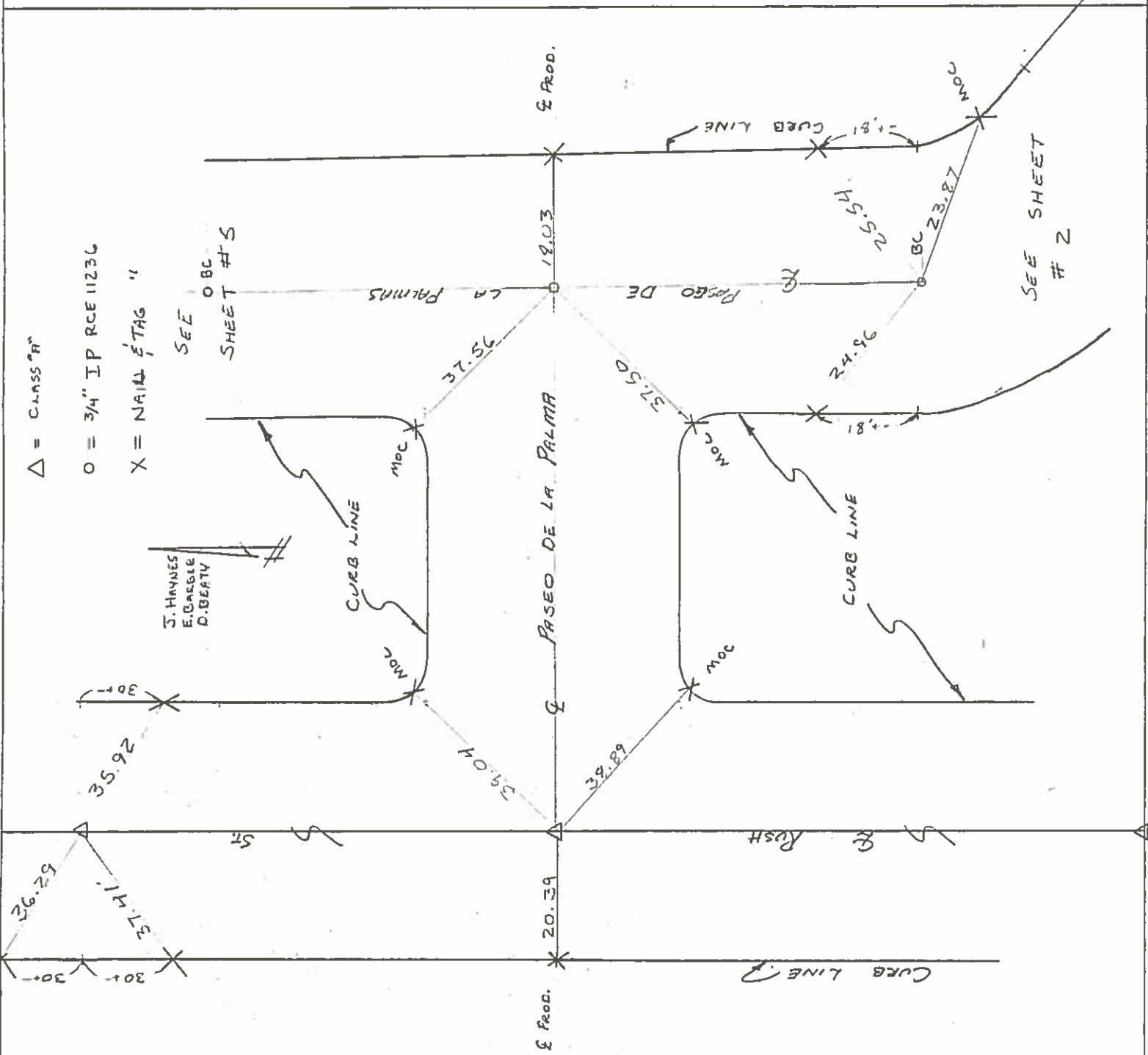
W.O. 9002-1 DATE: 4-21-80

IDENT. TR. 10528

CALCS by \_\_\_\_\_ CK'D by \_\_\_\_\_

## E TIES TR. 10528

RCE No. \_\_\_\_\_



J. HAYNES  
E. GARGLE  
D. BEATY

SEE  
SHEET # 5

Originated From:

- 729 SOUTH PARK VIEW STREET, LOS ANGELES, CALIFORNIA 90057 (213) 385-7134
- 4500 CAMPUS DRIVE, SUITE 114, NEWPORT BEACH, CALIFORNIA 92660 (714) 556-2960



# ERVIN ENGINEERING

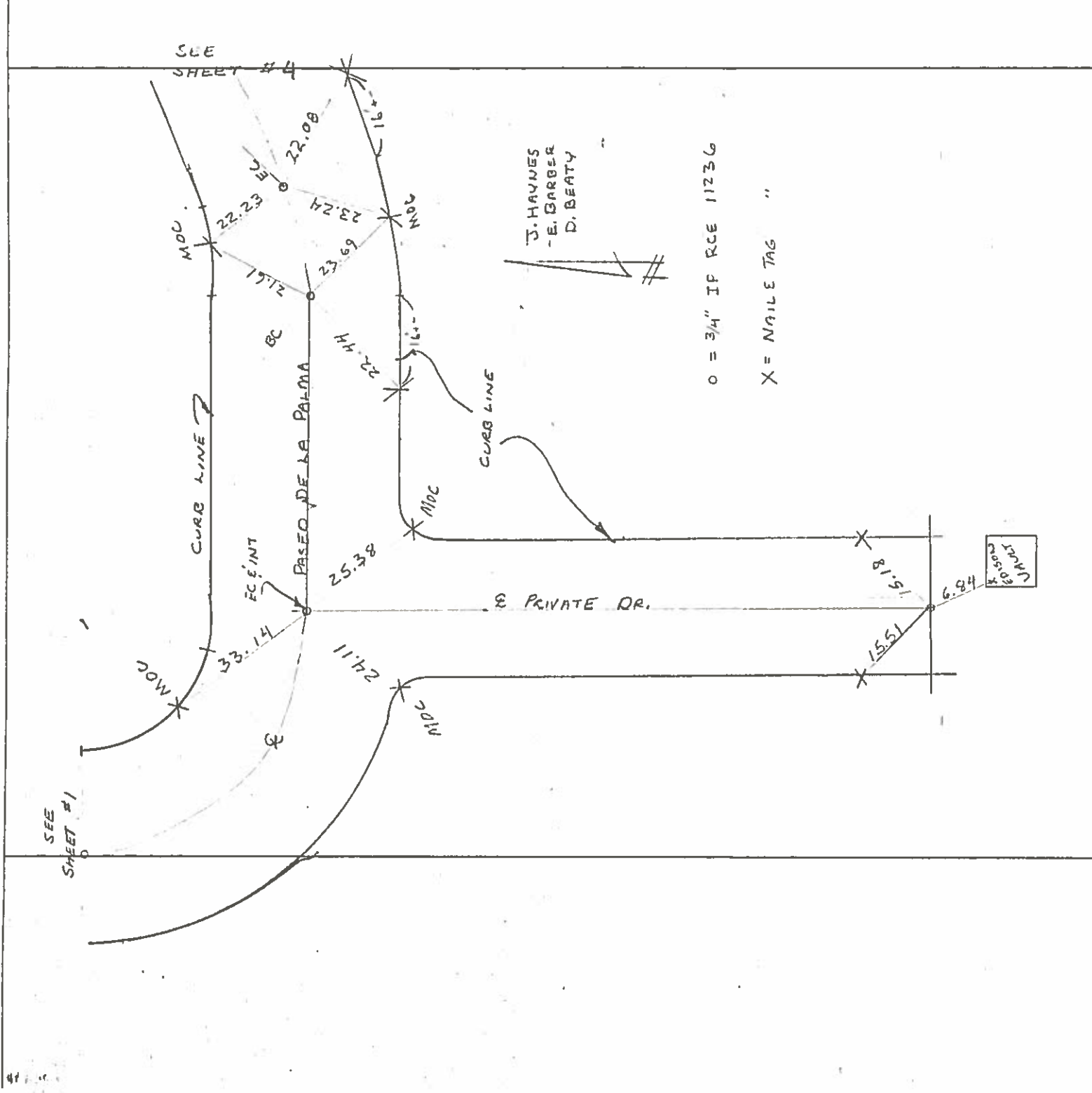
CIVIL ENGINEERS · LAND PLANNERS · CONSULTANTS  
A DIVISION OF ERVIN, GHORMLEY, JOHNSON & ASSOCIATES  
LOS ANGELES · NEWPORT BEACH · CAMARILLO · INDIO · GROVER CITY

SHEET 2 OF 5

W.O. 90022-1 DATE: 4-21-81  
IDENT. TR. 10528  
CALCS by \_\_\_\_\_ CK'D by \_\_\_\_\_

☞ TIES TR. 10528

RCE No. \_\_\_\_\_



Originated From:

- 729 SOUTH PARK VIEW STREET, LOS ANGELES, CALIFORNIA 90057
- 4500 CAMPUS DRIVE, SUITE 114, NEWPORT BEACH, CALIFORNIA 92660

(213) 385-7134

(714) 556-2960





# ERVIN ENGINEERING

CIVIL ENGINEERS • LAND PLANNERS • CONSULTANTS

A DIVISION OF ERVIN, GHORMLEY, JOHNSON & ASSOCIATES  
LOS ANGELES • NEWPORT BEACH • CAMARILLO • INDIO • GROVER CITY

SHEET 3 OF 5

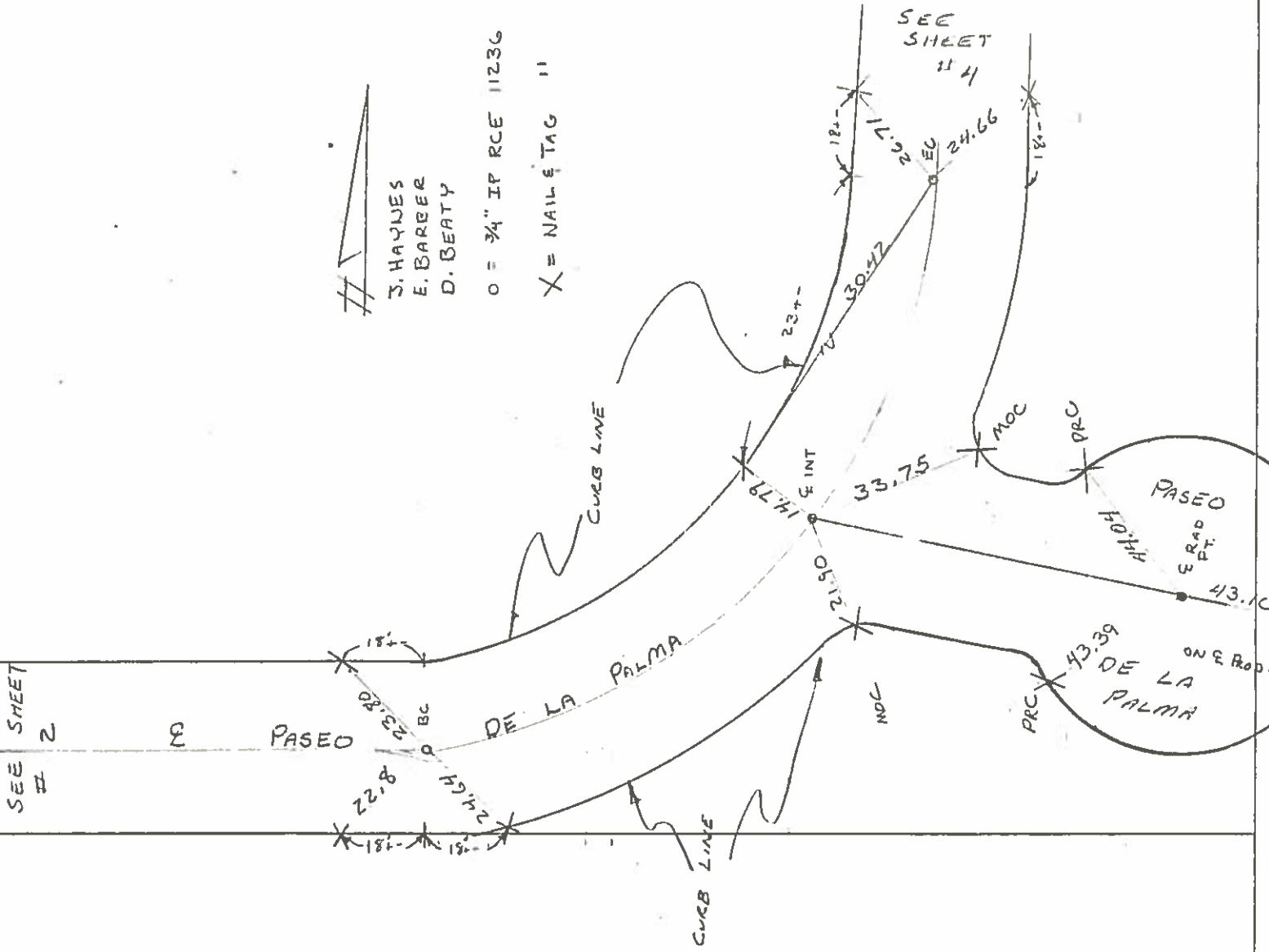
W.O. 2002-1 DATE: 4-21-80

IDENT. TR. 10528

CALCS by \_\_\_\_\_ CK'D by \_\_\_\_\_

R TIES TR. 10528

RCE No. \_\_\_\_\_



J. HAYNES  
E. BARBER  
D. BEATY

0 = 3/4" IF RCE 11236

X = NAIL & TAG "

Originated From:

- 729 SOUTH PARK VIEW STREET, LOS ANGELES, CALIFORNIA 90057 (213) 385-7134
- 4500 CAMPUS DRIVE, SUITE 114, NEWPORT BEACH, CALIFORNIA 92660 (714) 556-2960



# ERVIN ENGINEERING

CIVIL ENGINEERS • LAND PLANNERS • CONSULTANTS

A DIVISION OF ERVIN, GHORMLEY, JOHNSON & ASSOCIATES  
LOS ANGELES • NEWPORT BEACH • CAMARILLO • INDIO • GROVER CITY

SHEET 4 OF 5

W.O. 9002-1 DATE: 4-21-30  
IDENT. TR 10528  
CALCS by \_\_\_\_\_ CK'D by \_\_\_\_\_

E TIES TR. 10528

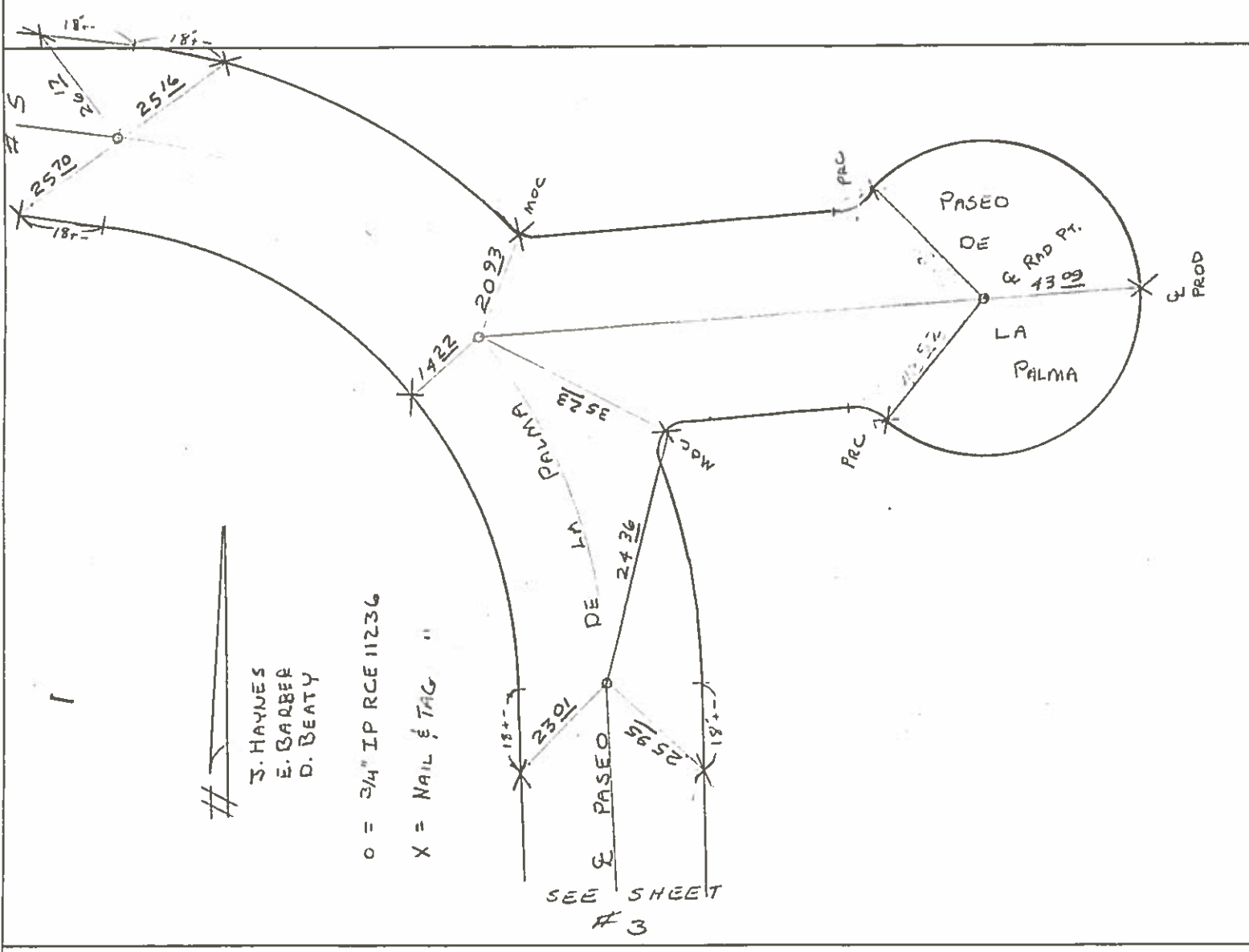
RCE No. SEE SHEET



#3  
S. HAYNES  
E. BARBER  
D. BEATY

O = 3/4" IP RCE 11236

X = NAIL & TAG "



Originated From:

- 729 SOUTH PARK VIEW STREET, LOS ANGELES, CALIFORNIA 90057 (213) 385-7134
- 4500 CAMPUS DRIVE, SUITE 1114, NEWPORT BEACH, CALIFORNIA 92660 (714) 556-2960



# ERVIN ENGINEERING

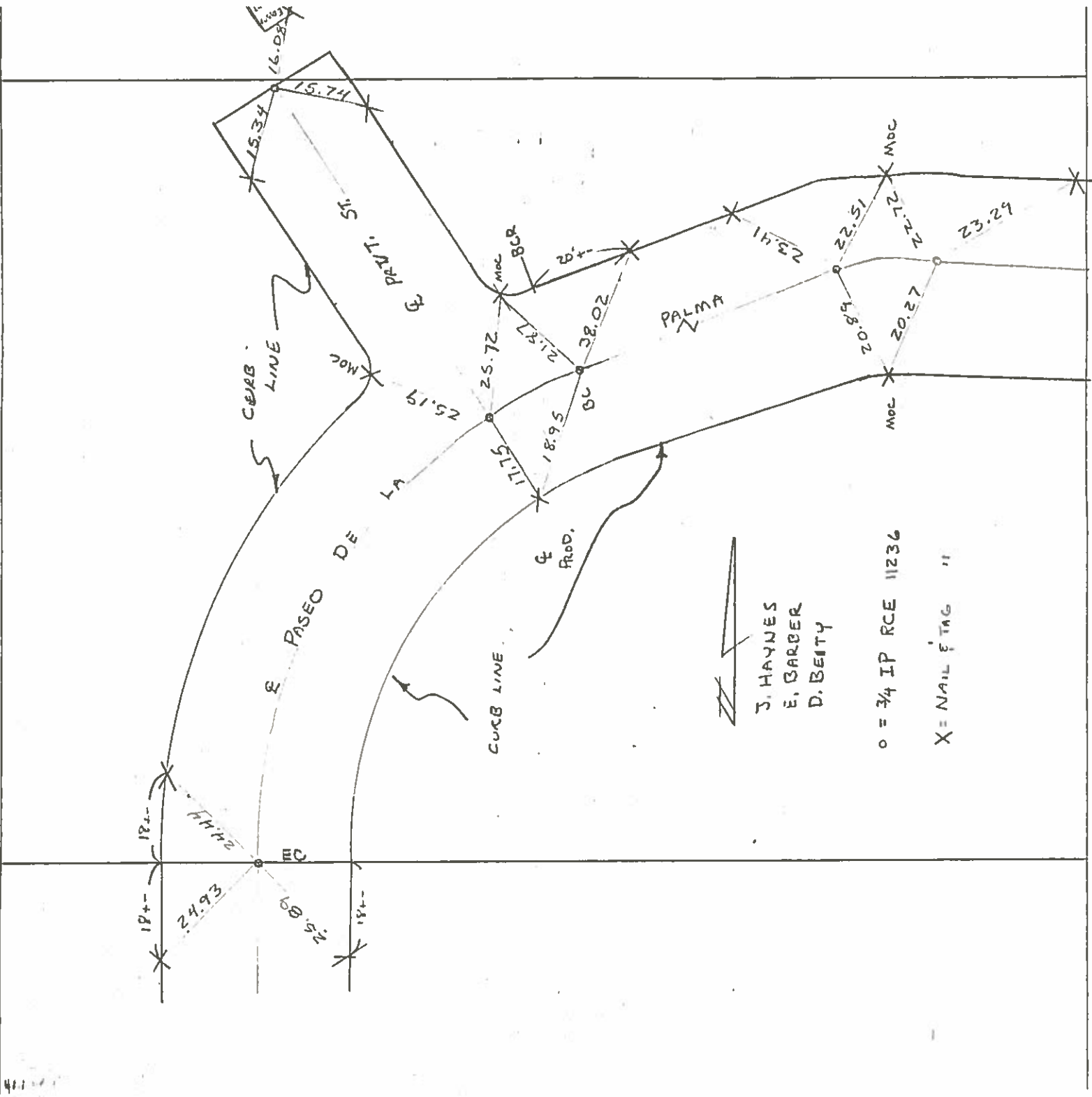
CIVIL ENGINEERS • LAND PLANNERS • CONSULTANTS  
A DIVISION OF ERVIN, GHORMLEY, JOHNSON & ASSOCIATES  
LOS ANGELES • NEWPORT BEACH • CAMARILLO • INDIO • GROVER CITY

SHEET 5 OF 5

W.O. 9002-1 DATE: 4-21-80  
IDENT. TR 10528  
CALCS by \_\_\_\_\_ CK'D by \_\_\_\_\_

E TIES TR 10528

RCE No. \_\_\_\_\_



Originated From:

- 729 SOUTH PARK VIEW STREET, LOS ANGELES, CALIFORNIA 90057 (213) 385-7134
- 4500 CAMPUS DRIVE, SUITE 114, NEWPORT BEACH, CALIFORNIA 92660 (714) 556-2960



# ERVIN ENGINEERING

CIVIL ENGINEERS / A/E/D PLANNERS / CONSULTANTS

A DIVISION OF ERVIN, GHORMLEY, JOHNSON & ASSOCIATES  
LOS ANGELES · NEWPORT BEACH · CAMARILLO · INDIO · GROVER CITY

SHEET \_\_\_\_\_ OF \_\_\_\_\_

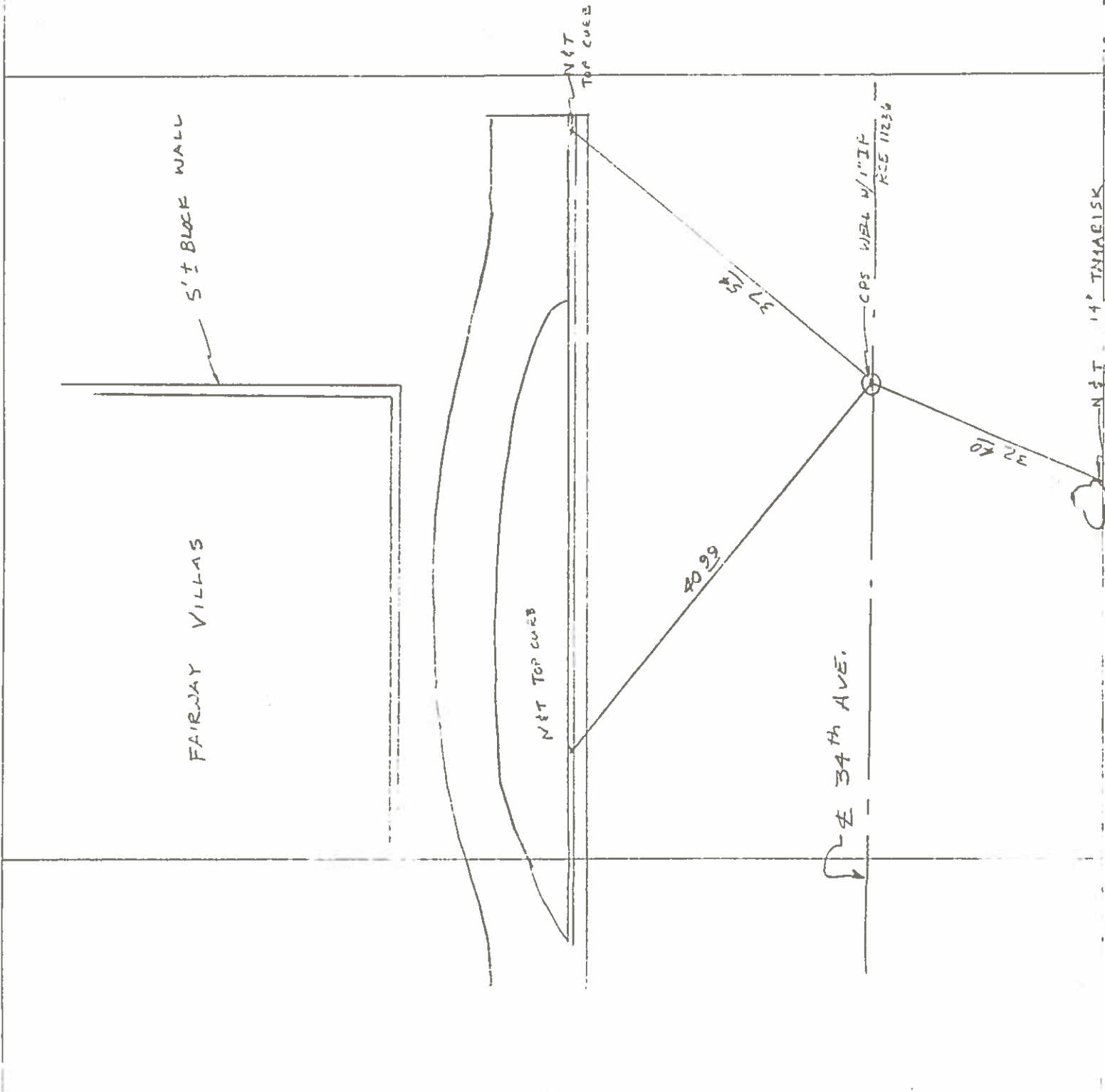
W.O. 2022-1 DATE: July 23, 2020

IDENT. 1810528

CALCS by \_\_\_\_\_ CK'D by \_\_\_\_\_

VALCO - FAIRWAY VILLAS

RCE No. \_\_\_\_\_



Originated From:

17 4500 SOUTH PARK VIEW STREET LOS ANGELES, CALIFORNIA 9005, (213) 385-7134  
4500 CAMPUS DRIVE SUITE 114 NEWPORT BEACH, CA 92760 (714) 556 2960

RIVERSIDE COUNTY FLOOD CONTROL & WATER CONSERVATION DISTRICT

Job No. 226-6-8-0040-04-16

Date 1/24/94

Page 1

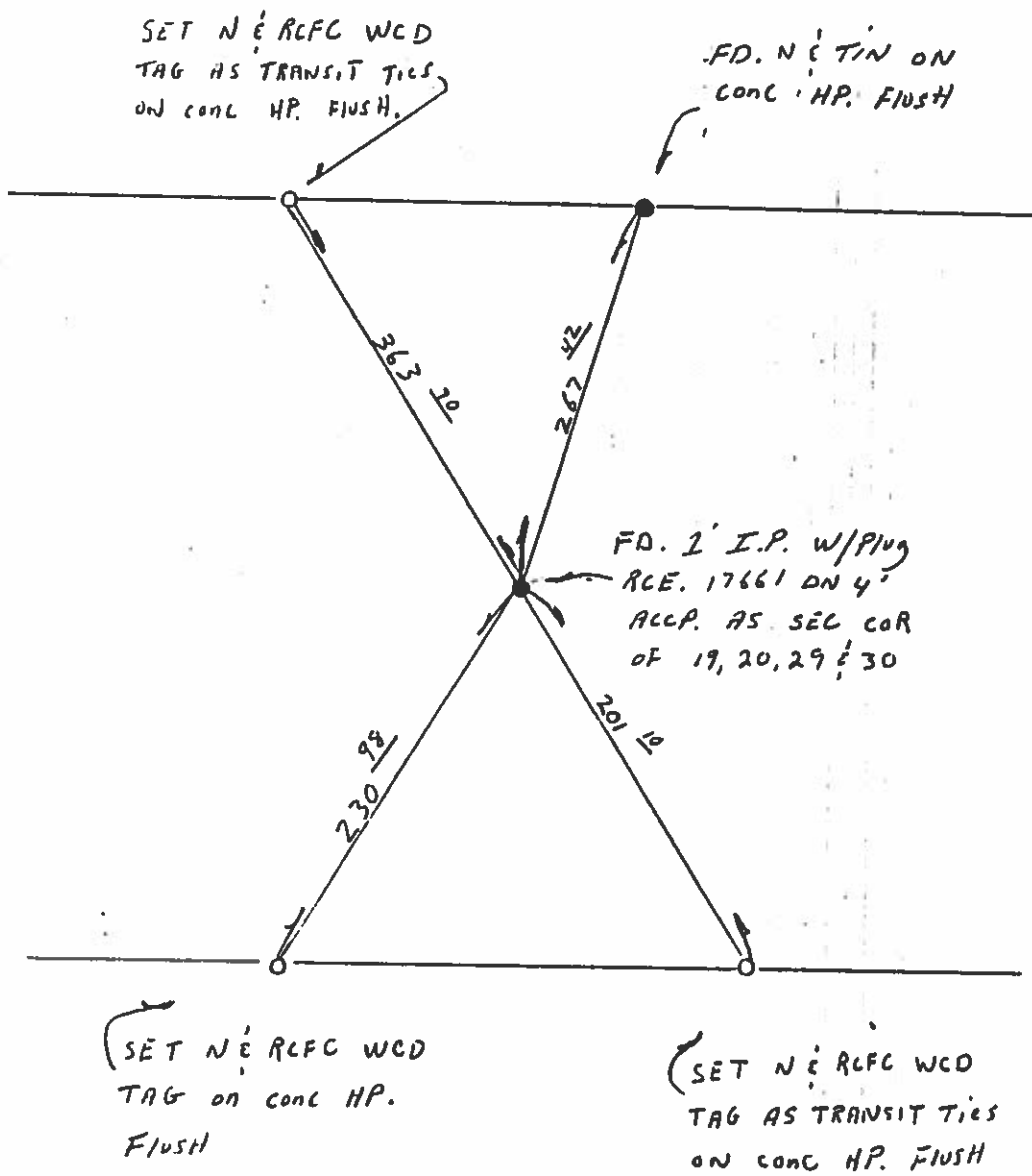
Project Palm Spd Levee PH II

Sheet 1 of 1

Survey Party HOFFERDER, MANNILL, CLEMENTS

(9)

Survey Notes



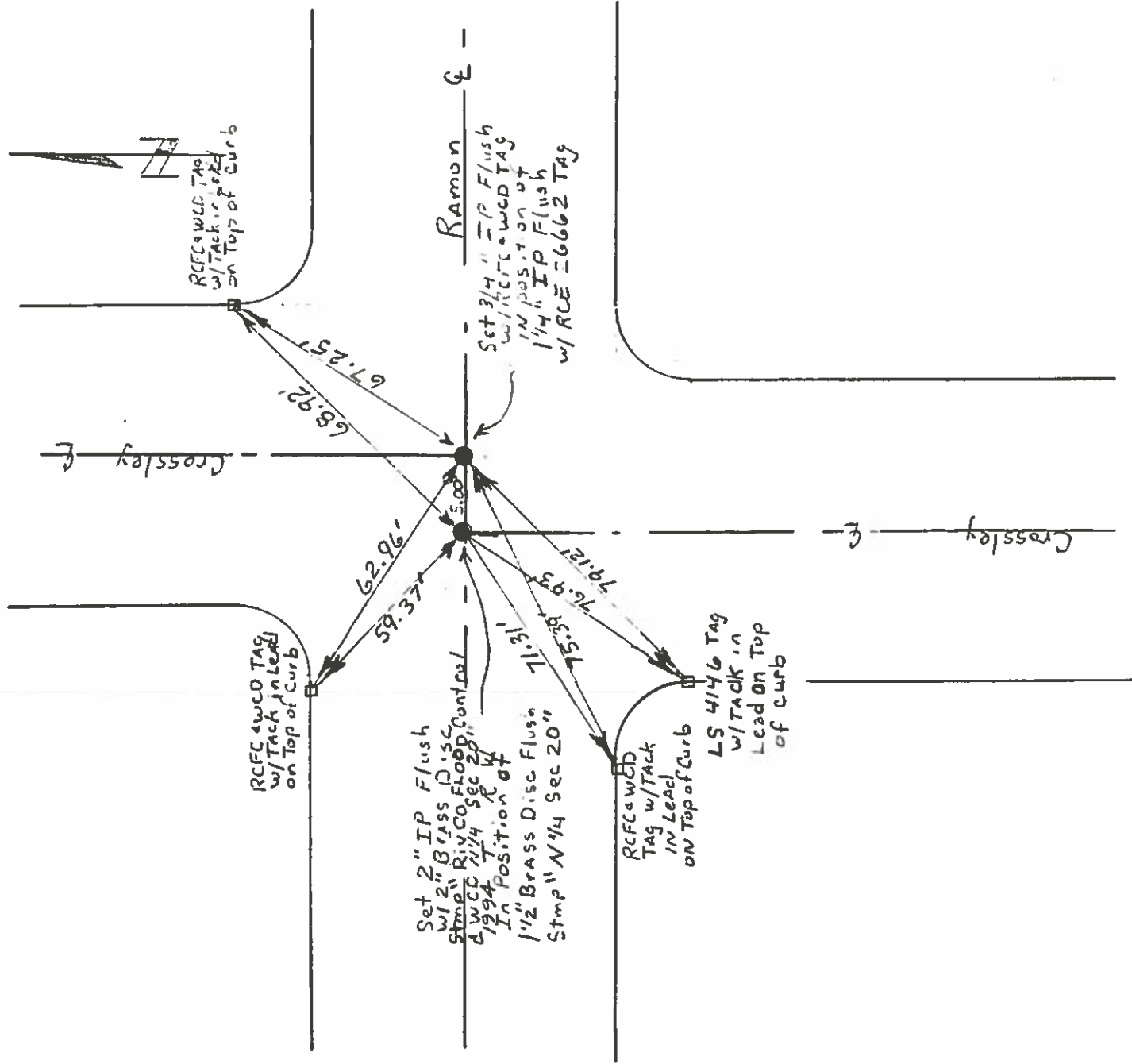
RIVERSIDE COUNTY FLOOD CONTROL & WATER CONSERVATION DISTRICT

Job No. 2266-8-0400-00-16 Date Nov 21 84 Page 1

Project Palm Springs Line 34 Sheet 1 of 1

Survey Party Hofferber Jalbert SEC. 20, T. 4 S, R. 5 E

Reset Monuments @ Ramon and Crossley



Survey Notes

Set 2" IP Flush w/ 2" Brass Disc Stamp Riv. CO Flood Control & WCD 1/4 Sec 20, T. 4 S, R. 5 E In Position at 1994

Set 3/4" IP Flush w/ RCFC w/CD TAG IN POSITION at 1/4" IP Flush w/ RCE 26662 TAG



RIVERSIDE COUNTY FLOOD CONTROL & WATER CONSERVATION DISTRICT

Job No. 226-6-8-0300-02-16

Date 2-16-94

Page

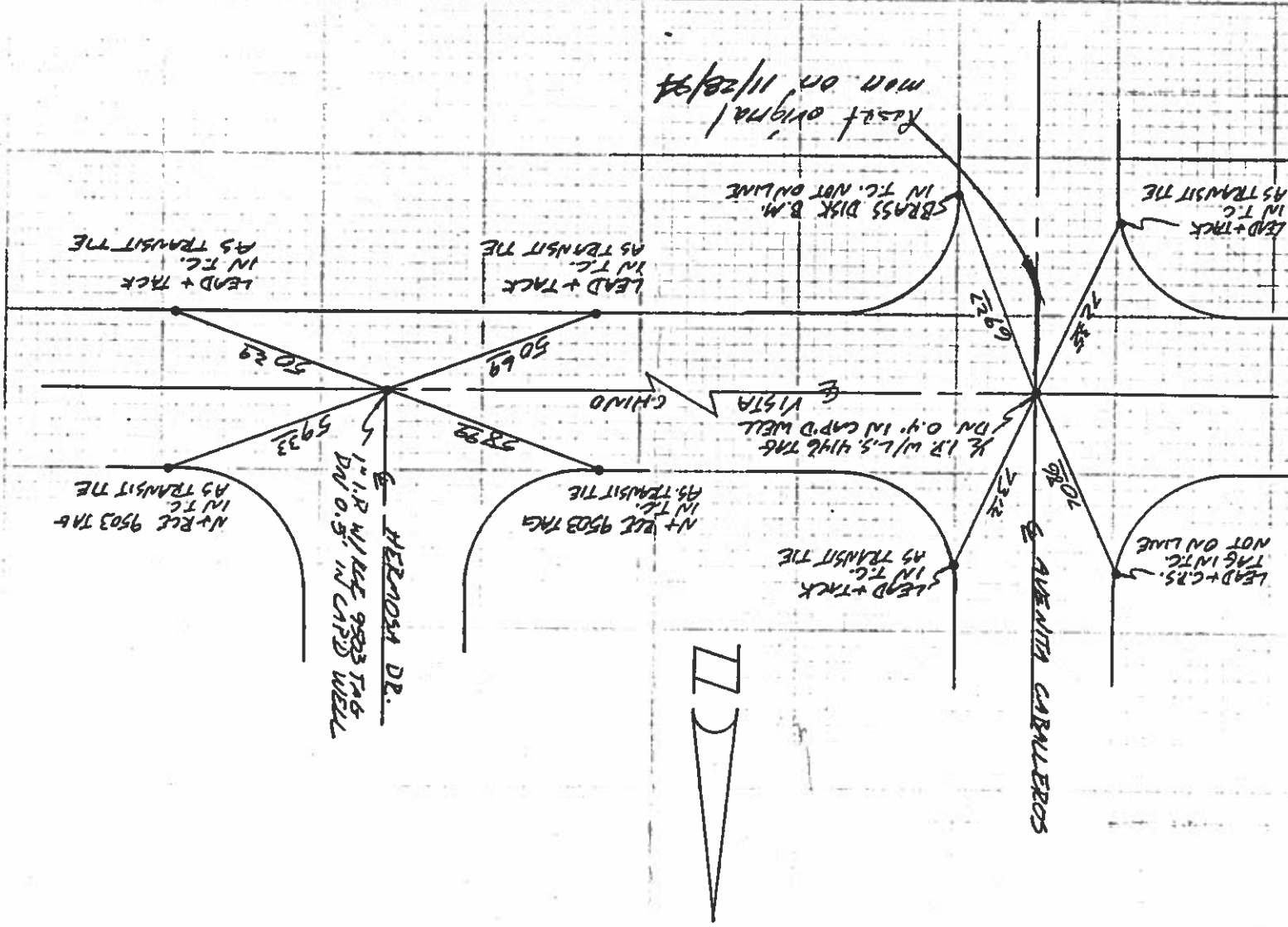
Project P.S. LINE 6

Sheet 1

of

2

Survey Party HOFFERBER, McWELL, CLEMENTS



Survey Notes

KENNETH L. EDWARDS  
GENERAL MANAGER-CHIEF ENGINEER

1995 MARKET STREET  
RIVERSIDE, CA 92501-1719  
(909) 275-1200  
(909) 788-9965 FAX

RIVERSIDE COUNTY FLOOD CONTROL  
AND WATER CONSERVATION DISTRICT

*Refc*  
*LINE 6 & FILE*  
*CP. 91-30*

January 18, 1995

Mr. Robert J. Rockett, City Engineer  
City of Palm Springs  
3200 East Tahquitz Canyon Way  
Palm Springs, CA 92263-2742

Dear Mr. Rockett:

Re: Corner Records required per  
AB 1414

The District appreciates your interest in the perpetuation of survey monuments in your city, as we do in all municipalities and jurisdictions. We have been aware of Assembly Bill 1414 since its inception, and applaud its merits. Be apprised that any required filings pursuant to the Business and Professions Code will be abided by.

If I can be of any further assistance, please call me at 909/275-1223.

Very truly yours,



WILLIAM H. YOUNG  
Chief of Surveying and Mapping

MJK:bjp  
rcfc\743

RECEIVED

JAN 24 1995

CITY OF PALM SPRINGS  
ENGINEERING