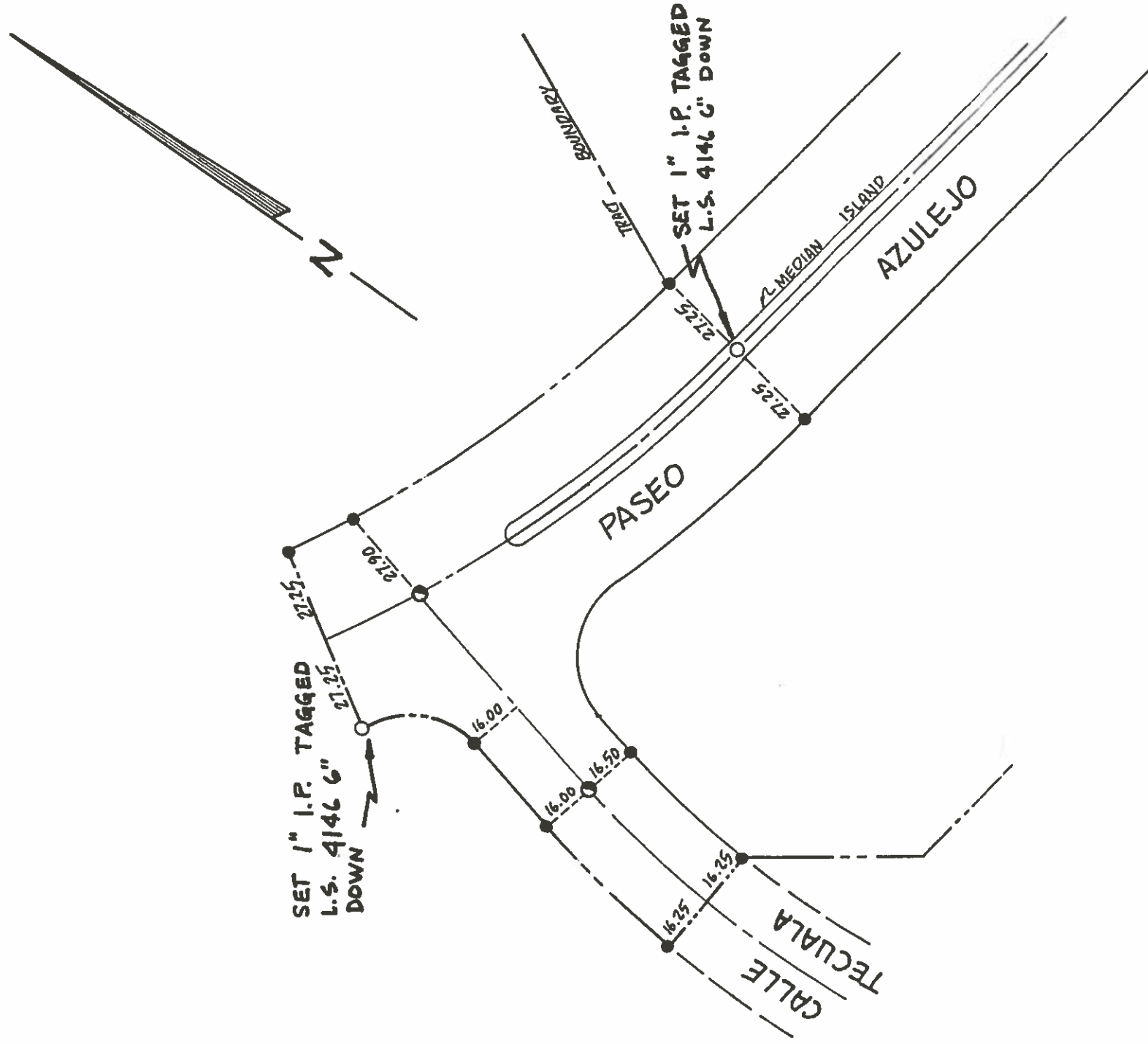


# TRACT MAP NO. 13792-3

BEING A PORTION OF WEST 1/2 OF SECTION 28, T.4S., R.5E., S.B.B. & M.  
STREET CENTERLINE MONUMENTS & TIES

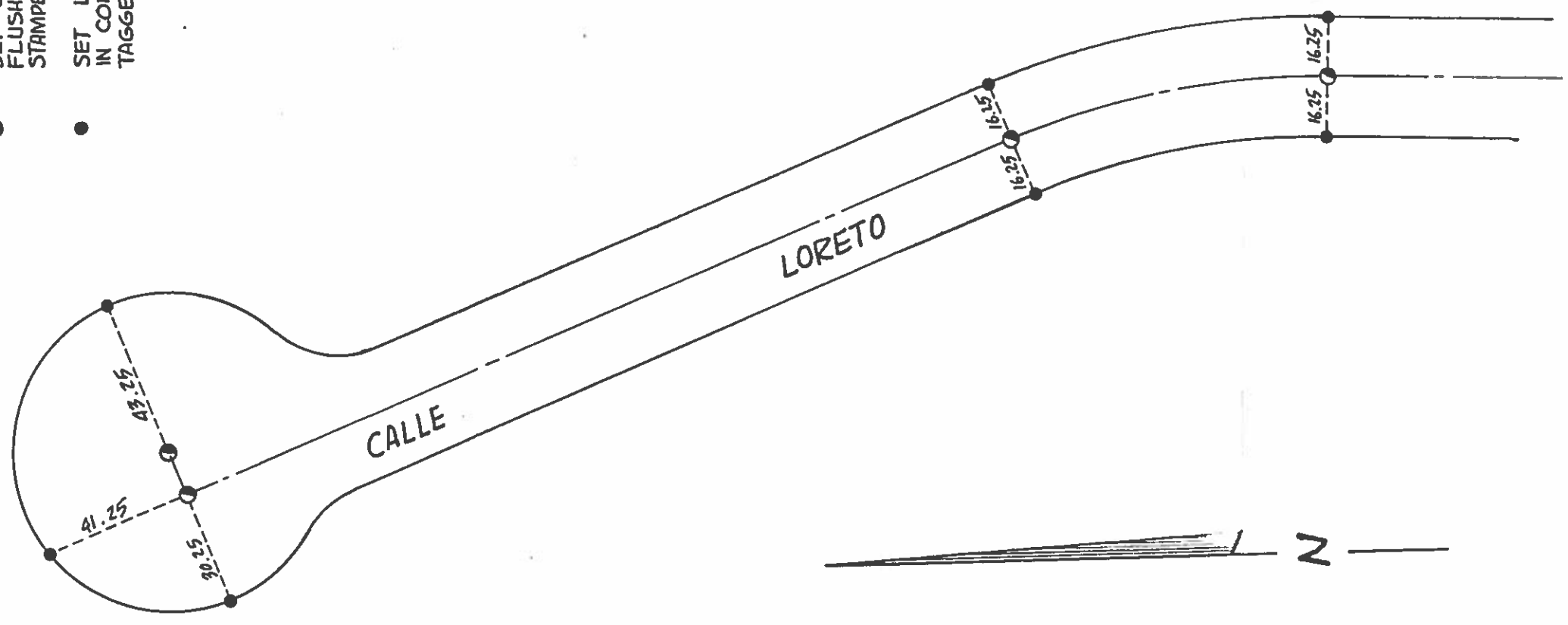
- SET BRASS HEAD MONUMENT FLUSH WITH A.C. PAVEMENT STAMPED L.S. 4146.
- SET 1" I.P. TAGGED L.S. 4146 6" DOWN
- SET LEAD & TACK IN DRILL HOLE IN CONCRETE CURB TAGGED L.S. 4146.



# TRACT MAP NO. 13792-3

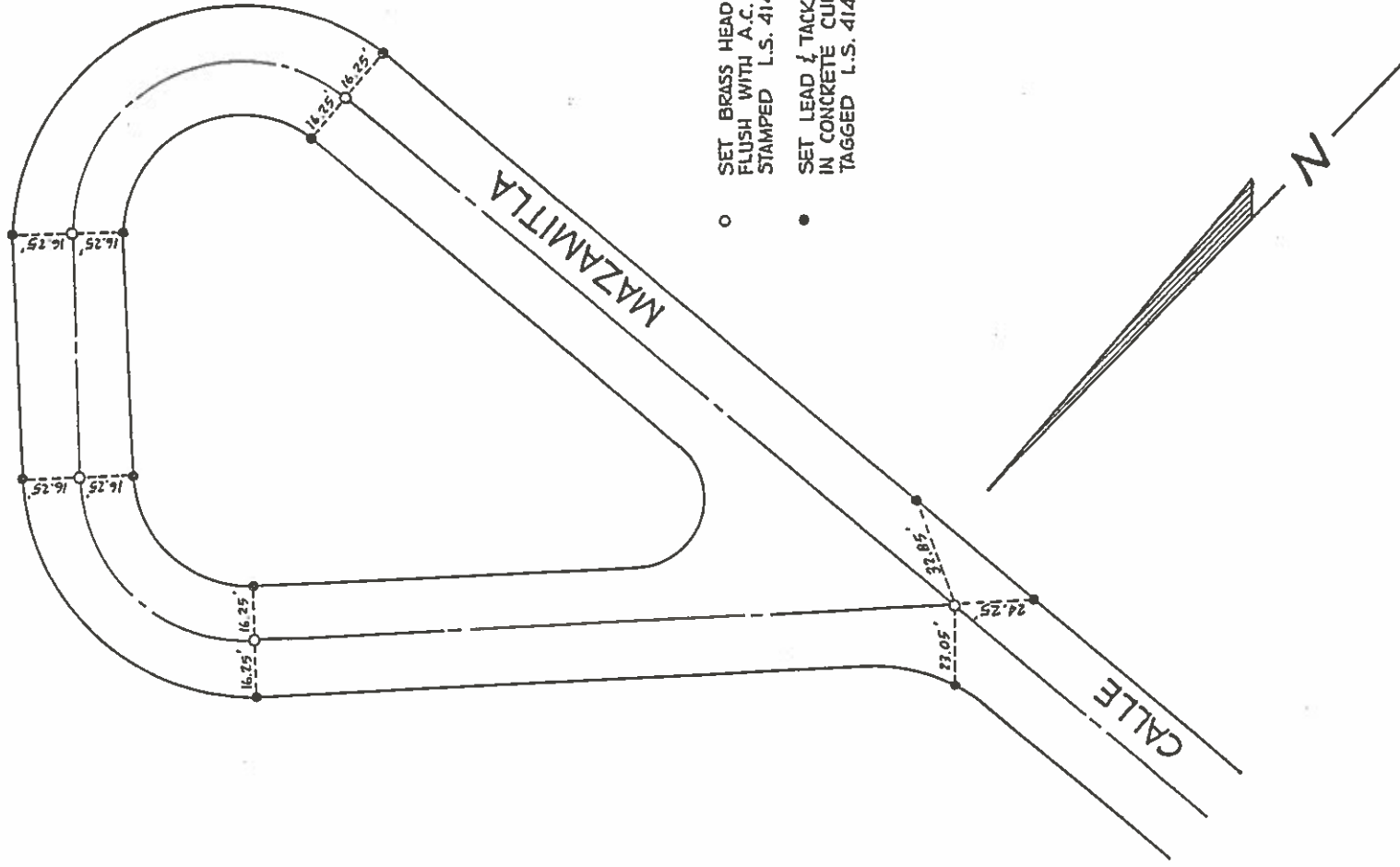
BEING A PORTION OF WEST 1/2 OF SECTION 28, T.4S., R.5E., S.B.B. & M.  
STREET CENTERLINE MONUMENTS & TIES

- SET BRASS HEAD MONUMENT FLUSH WITH A.C. PAVEMENT STAMPED L.S. 4146
- SET LEAD 1/4 TACK IN DRILL HOLE IN CONCRETE CURB, TAGGED L.S. 4146.



# TRACT MAP NO. 13792-2

BEING A PORTION OF WEST 1/2 OF SECTION 28, T.4S., R.5E., S.B.B. 1/4 M.  
STREET CENTERLINE MONUMENTS & TIES

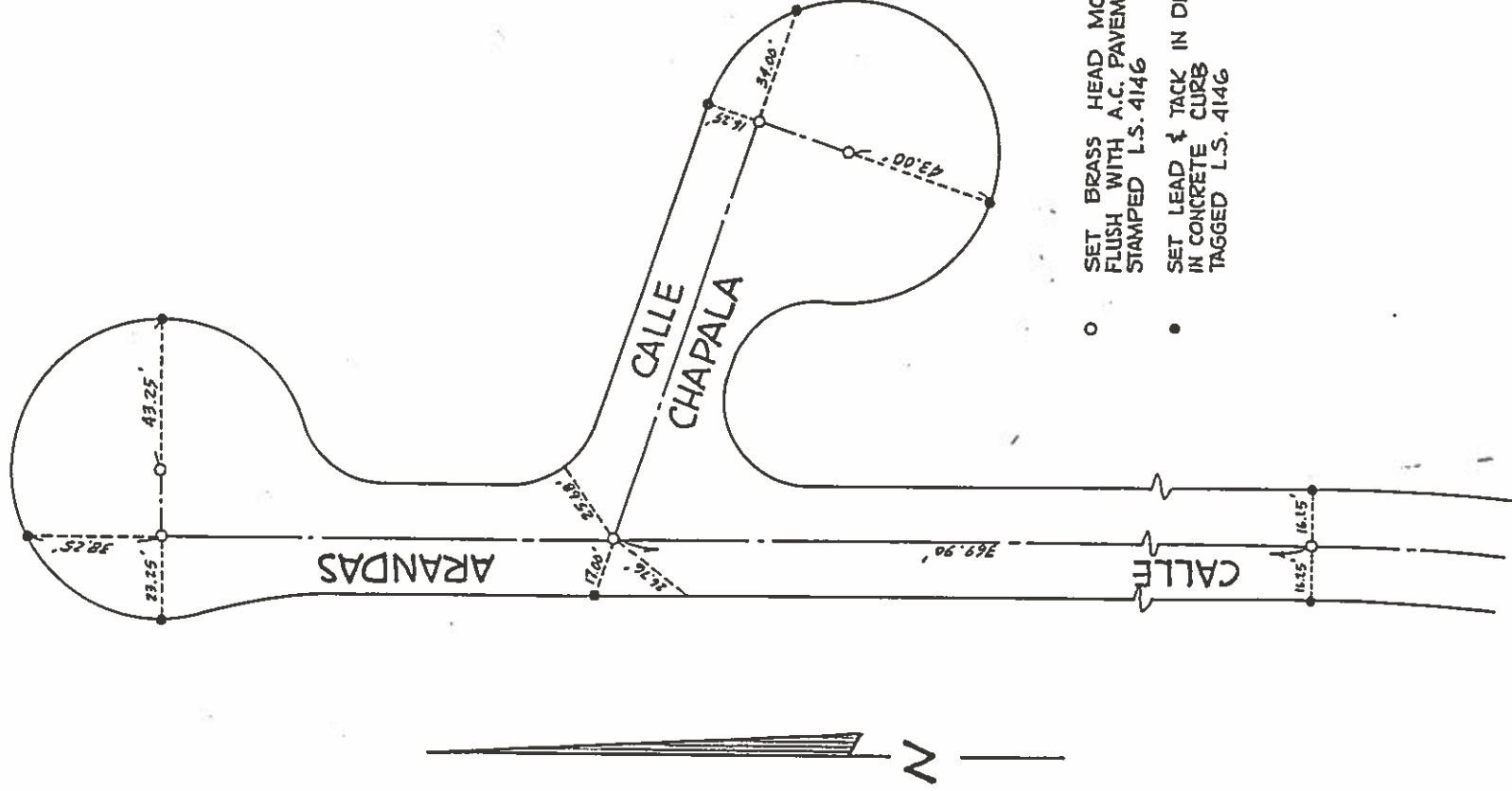


- SET BRASS HEAD MONUMENT FLUSH WITH A.C. PAVEMENT STAMPED L.S. 4146
- SET LEAD 1/2 TACK IN DRILL HOLE IN CONCRETE CURB TAGGED L.S. 4146

# TRACT MAP NO. 13792-2

BEING A PORTION OF WEST 1/2 OF SECTION 28, T.4S., R.5E., S.B.B. & M.

## STREET CENTERLINE MONUMENTS & TIES



- SET BRASS HEAD MONUMENT FLUSH WITH A.C. PAVEMENT STAMPED L.S. 4146
- SET LEAD & TACK IN DRILL HOLE IN CONCRETE CURB TAGGED L.S. 4146

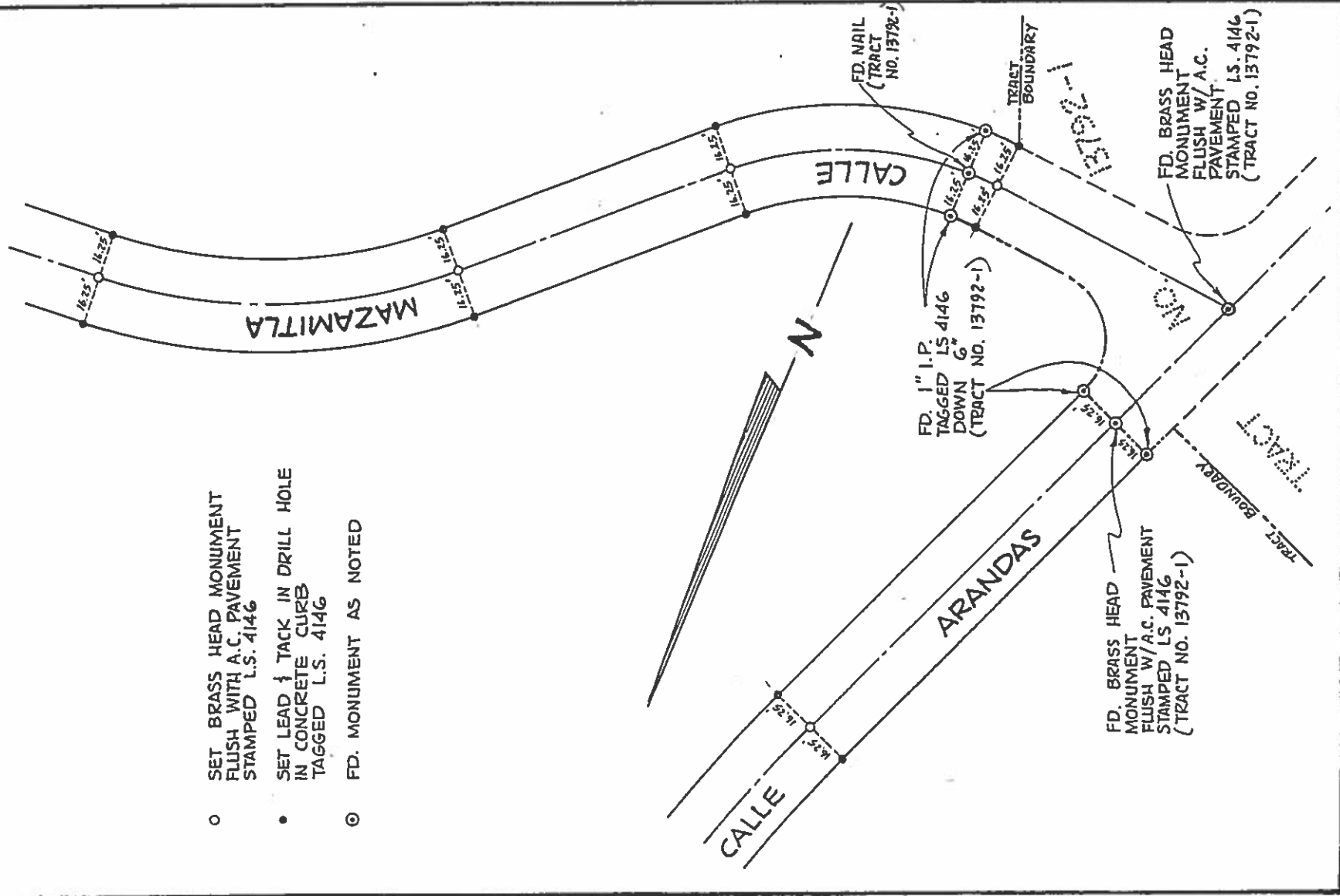
# TRACT MAP NO. 13792-2

BEING A PORTION OF WEST 1/2 OF SECTION 28, T.4S., R.5E., S.B.B. & M.  
**STREET CENTERLINE MONUMENTS & TIES**

○ SET BRASS HEAD MONUMENT  
 FLUSH WITH A.C. PAVEMENT  
 STAMPED L.S. 4146

● SET LEAD 1/4 TACK IN DRILL HOLE  
 IN CONCRETE CURB  
 TAGGED L.S. 4146

⊙ FD. MONUMENT AS NOTED



# TRACT MAP NO. 13792-2

BEING A PORTION OF WEST 1/2 OF SECTION 28, T.4S., R.5E., S.B.E. 1/4  
**STREET CENTERLINE MONUMENTS & TIES**

- SET BRASS HEAD MONUMENT FLUSH WITH A.C. PAVEMENT, STAMPED L.S. 4146
- SET 1" I.P. TAGGED L.S. 4146, 6" DOWN
- SET LEAD & TACK IN DRILL HOLE IN CONCRETE CURB, TAGGED L.S. 4146
- ◎ FOUND MONUMENT AS NOTED.

