

34-34

NOTE

CITY LIMITS

34-13 34-14

34

K-3

34-17

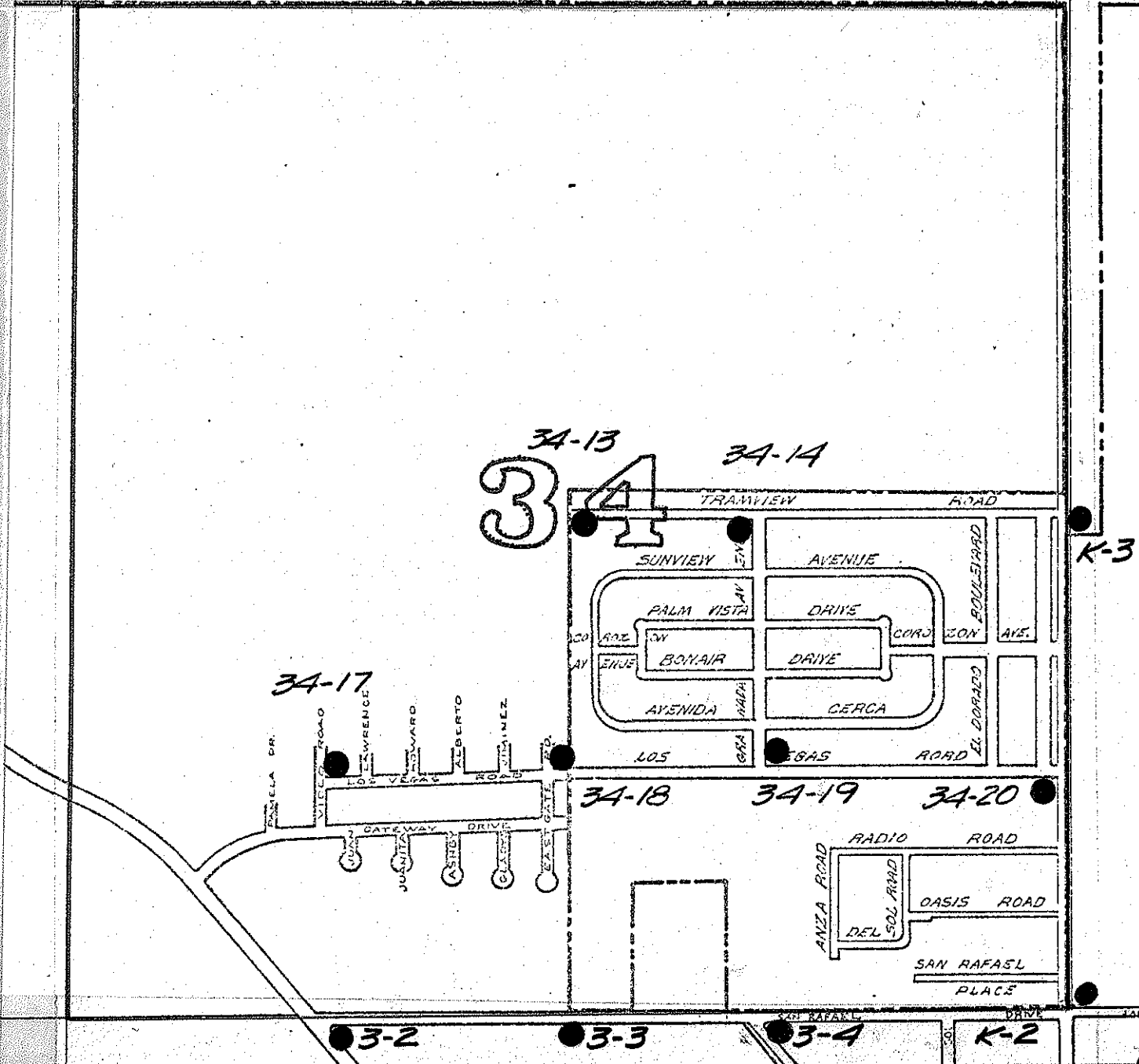
34-18 34-19 34-20

3-2

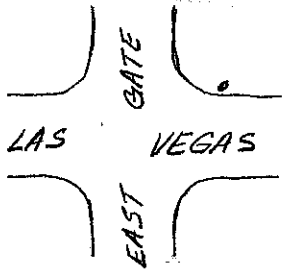
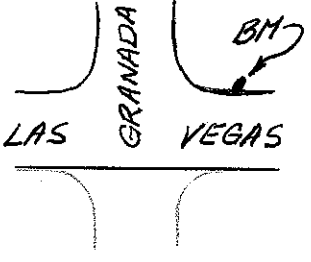
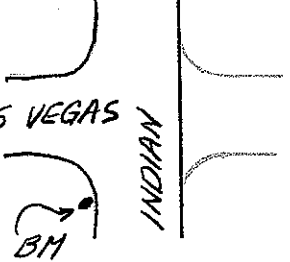
3-3

3-4

K-2



	<p>See Section #3 See Section #3 See Section #3 See Section #3</p>		<p>3-2 3-3 3-4 K-2</p>
	<p>2" C.P.S. Bronze disc stamped "34-13" set in curb on south side of Tramview Rd. app. 109 feet \pm from the end of Tramview Rd. RESET B.M. 65' EAST FROM OLD B.M. CPS BRASS DISC STAMPED 34-13</p>	<p>644.481 644.119</p>	<p>34-13</p>
	<p>2" C.P.S. Bronze disc stamped "34-14" set in side walk behind WSW curb return at Tramview Rd. and Granada Ave.</p>	<p>634.760</p>	<p>34-14</p>
	<p>2" C.P.S. Bronze disc stamped "K-3" set in concrete at the south side of power pole #432415S on the east side of Indian Ave. at Tramview Rd.</p>	<p>613.976</p>	<p>K-3</p>
	<p>2" C.P.S. Bronze disc stamped "34-17" set in ENE curb return at Las Vegas Rd. and Video Rd.</p>	<p>655.220</p>	<p>34-17</p>

LOCATION	DESCRIPTION	ELEVATION	BENCHMARK
	<p>2" C.P.S. Bronze disc stamped "34-18" set in ENE curb return at Las Vegas Rd. and East Gate Rd.</p>	<p>639.630</p>	<p>34-18</p>
	<p>2" C.P.S. Bronze disc stamped "34-19" set in ENE curb return at Las Vegas Rd. and Granada Ave.</p>	<p>626.116</p>	<p>34-19</p>
	<p>2" C.P.S. Bronze disc stamped "34-20" set in SSW curb return at Las Vegas Rd. and Indian Ave.</p>	<p>607.246</p>	<p>34-20</p>
