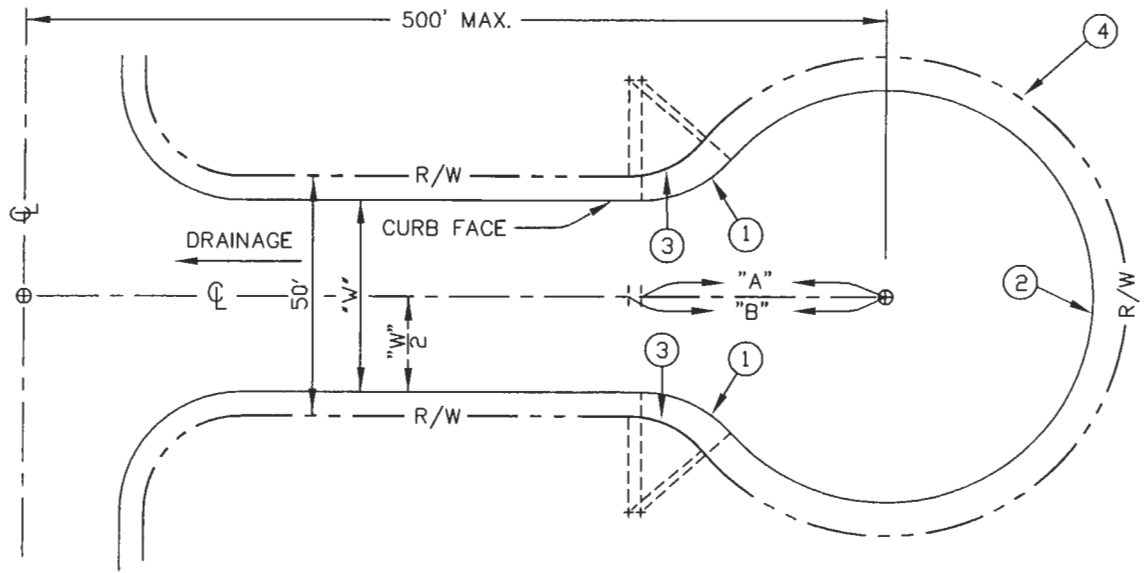


NO.	REVISIONS	APPROVED	DATE



CURVE DATA					
NO.	$\frac{W}{2}$	DELTA	R	L	"A"
①	16'	52°55'09"	25.00	23.09	54.25
①	18'	50°46'34"	25.00	22.16	52.68
①	20'	48°33'55"	25.00	21.19	50.98
②	16'	285°50'18"	43.00	214.52	---
②	18'	281°33'08"	43.00	211.30	---
②	20'	277°07'50"	43.00	207.98	---
③	---	49°59'41"	20.00	17.45	---
④	---	279°59'23"	50.00	244.34	---

"B" = 53.67'

**NOTES:**

- "L" = LENGTH OF CURVE. "R/W" = RIGHT OF WAY; "W" = ROAD WIDTH, "R" = RADIUS.
- CUL-DE-SAC SHALL DRAIN TO CROSS STREET WHEREVER POSSIBLE; ANY OTHER DRAINAGE ALTERNATIVES SHALL REQUIRE EASEMENTS OF A WIDTH TO BE DETERMINED AND APPROVED BY THE CITY ENGINEER.
- FOR CUL-DE-SACS IN HILLSIDE AREAS, THE MAXIMUM SLOPES SHALL BE CONSISTENT WITH NOTE NUMBER 1 ON STANDARD DRAWING NO.303.

<b>CITY OF PALM SPRINGS</b> PUBLIC WORKS & ENGINEERING DEPARTMENT	APPROVED:	DATE: <u>12/17/02</u>
	CITY ENGINEER	<b>28931</b> R.C.E.
<b>CUL-DE-SAC</b>	DRAWN BY: G.F.F.	FILE NO. STANDARDS
	CHECKED BY: M.L.F.	DWG. NO. <b>101</b>