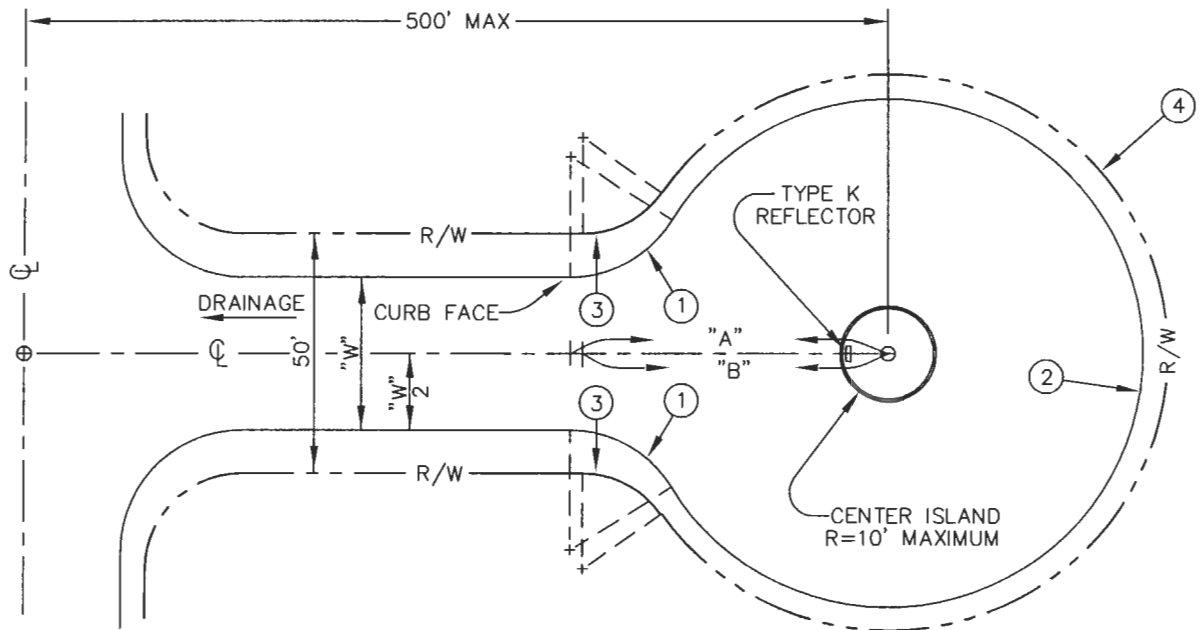


NO.	REVISIONS	APPROVED	DATE



CURVE DATA					
NO.	$\frac{W}{2}$	DELTA	R	L	"A"
①	16'	58°17'19"	25.00	25.43	66.36
①	18'	56°32'42"	25.00	24.67	65.08
①	20'	54°45'56"	25.00	23.90	63.71
②	16'	296°34'38"	53.00	274.34	---
②	18'	293°05'24"	53.00	271.12	---
②	20'	289°31'52"	53.00	267.82	---
③	---	54°45'56"	20.00	19.12	---
④	---	289°31'52"	58.00	293.09	---

"B" = 63.71'

NOTES:

- "L" = LENGTH OF CURVE; "R/W" = RIGHT-OF-WAY; "W" = ROAD WIDTH; "R" = RADIUS.
- CUL-DE-SAC SHALL DRAIN TO CROSS STREET WHEREVER POSSIBLE, ANY OTHER DRAINAGE ALTERNATIVES SHALL REQUIRE EASEMENTS OF A WIDTH TO BE DETERMINED BY THE CITY ENGINEER.
- THIS CUL-DE-SAC STANDARD SHALL BE USED IN APPROVED LOCATIONS ONLY.

CITY OF PALM SPRINGS PUBLIC WORKS & ENGINEERING DEPARTMENT	APPROVED: <i>[Signature]</i> CITY ENGINEER	DATE: <u>12/5/02</u> <u>28931</u> R.C.E.
	CUL-DE-SAC WITH CENTER ISLAND	DRAWN BY: G.F.F. FILE NO. STANDARDS CHECKED BY: M.L.F. DWG. NO. 103