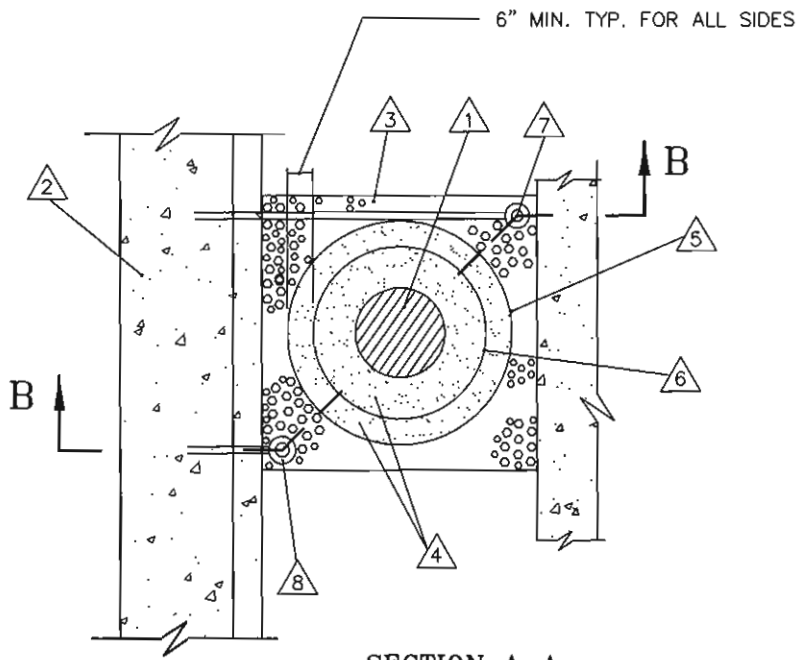


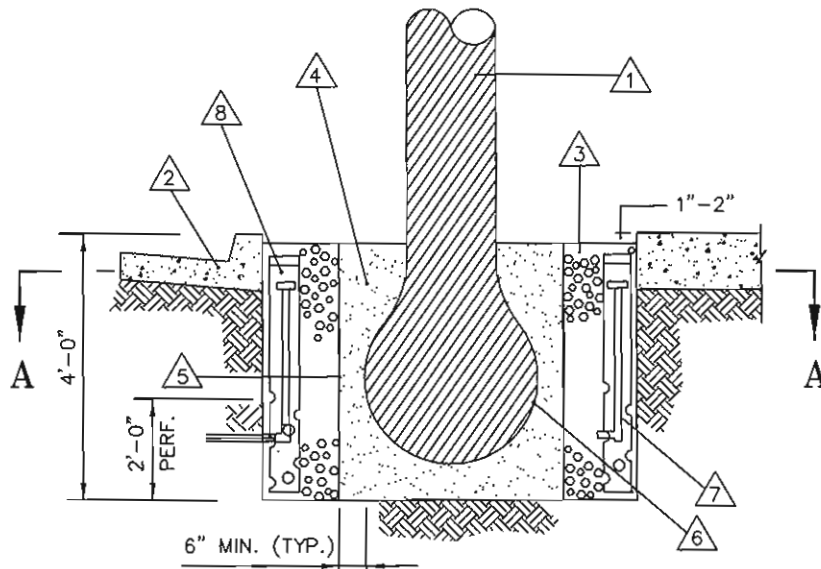
NO.	REVISIONS	APPROVED	DATE



SECTION A-A

LEGEND:

- ① NEW TREE
- ② EXISTING CURB AND GUTTER
- ③ 3/4" - 1-1/2" GRAVEL OR CRUSHED ROCK
- ④ BACKFILL W/ TOPSOIL AND PEATMOSS 3:1 BY VOLUME IN 9" LAYERS. WATER EACH LAYER UNTIL SETTLED. DO NOT TAMP.
- ⑤ DEEP ROOT BARRIER
- ⑥ ROOT BALL
- ⑦ 2-1/2" PRESSURE COMPENSATING BUBBLERS (1/2 GPM)
- ⑧ 6"Ø P.V.C. PERFORATED PIPE, 42" LONG WITH 1/2" HOLES (PIPES PLACED AT OPPOSITE CORNERS.



SECTION B-B

NOTE:

DEEP ROOT BARRIER SHALL BE MANUFACTURED BY DEEP ROOT CORP OF WESTMINSTER CA., STOCK NO. UB 24-2 OR THE EQUIVALENT MADE BY CENTURY PRODUCTS OF YORBA LINDA CA., OR APPROVED EQUAL.

CITY OF PALM SPRINGS PUBLIC WORKS & ENGINEERING DEPARTMENT TREE ROOT BARRIER FOR NEW TREE INSTALLATION	APPROVED: <i>[Signature]</i>	DATE: <i>1/30/08</i>
	CITY ENGINEER	28931
DRAWN BY: G.F.F.	FILE NO.	STANDARDS
CHECKED BY: M.L.F.	DWG. NO.	904