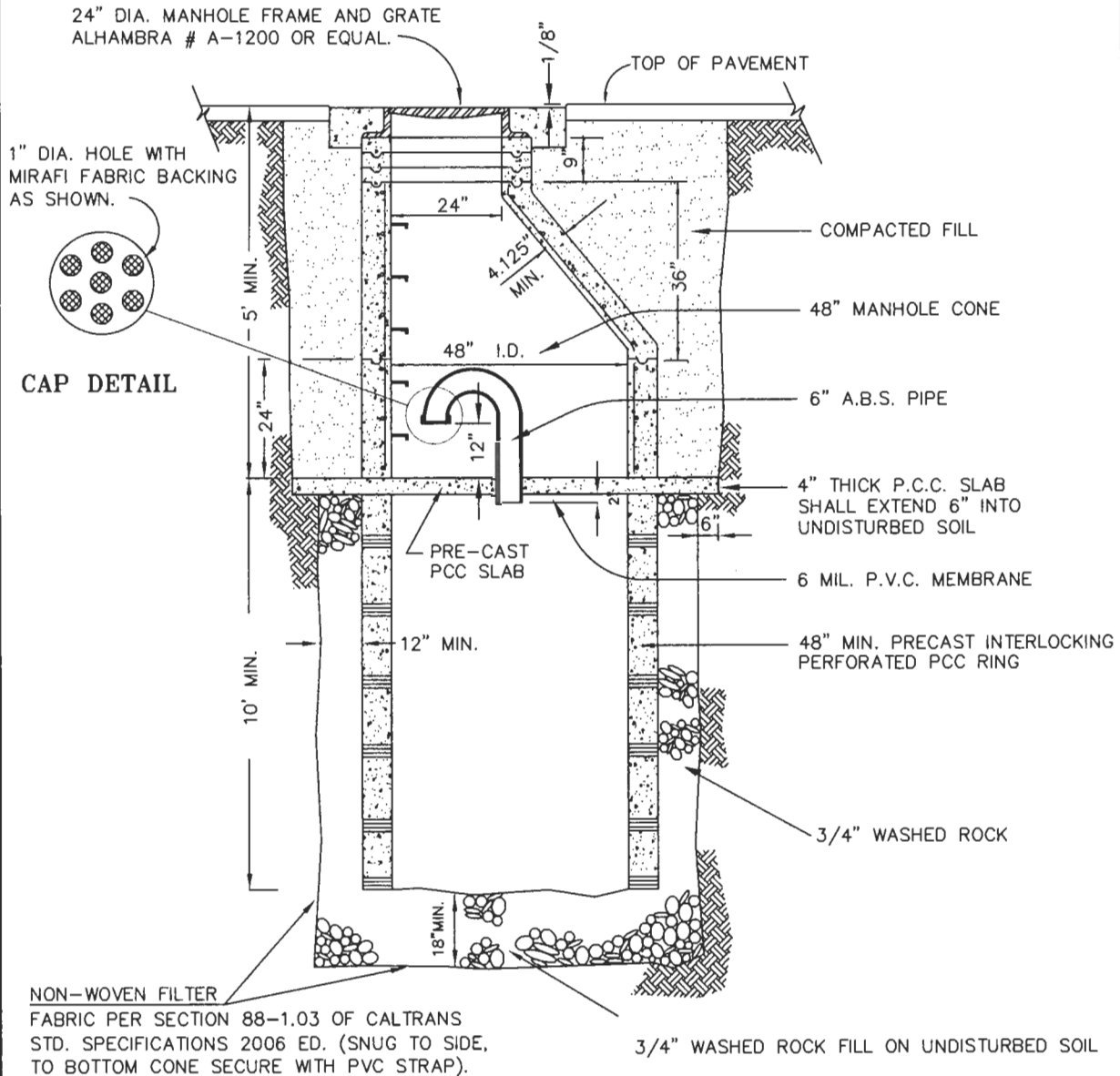


NO.	REVISIONS	APPROVED	DATE




NOTES:

1. PRECAST REINFORCED CONCRETE MANHOLE PIPE TO MEET REQUIREMENTS OF ASTM C 478 SPECIFICATIONS WITH INCREASES IN REINFORCEMENT AND WALL THICKNESS TO MEET LOCAL REQUIREMENTS. MINIMUM COMPRESSIVE STRENGTH OF CONCRETE SHALL BE 4000 P.S.I. AT 28 DAYS.
2. THE DRY WELL SHALL BE CONSTRUCTED BY USING INTERLOCKING PRECAST SECTIONS.
3. THE FINAL DESIGN SHALL BE APPROVED BY THE CITY ENGINEER.

CITY OF PALM SPRINGS
PUBLIC WORKS & ENGINEERING DEPARTMENT

APPROVED: 
CITY ENGINEER

DATE: 
28931
R.C.E.

STANDARD DRY WELL

DRAWN BY: G.F.F. FILE NO. STANDARD
CHECKED BY: M.L.F. DWG. NO. **715**