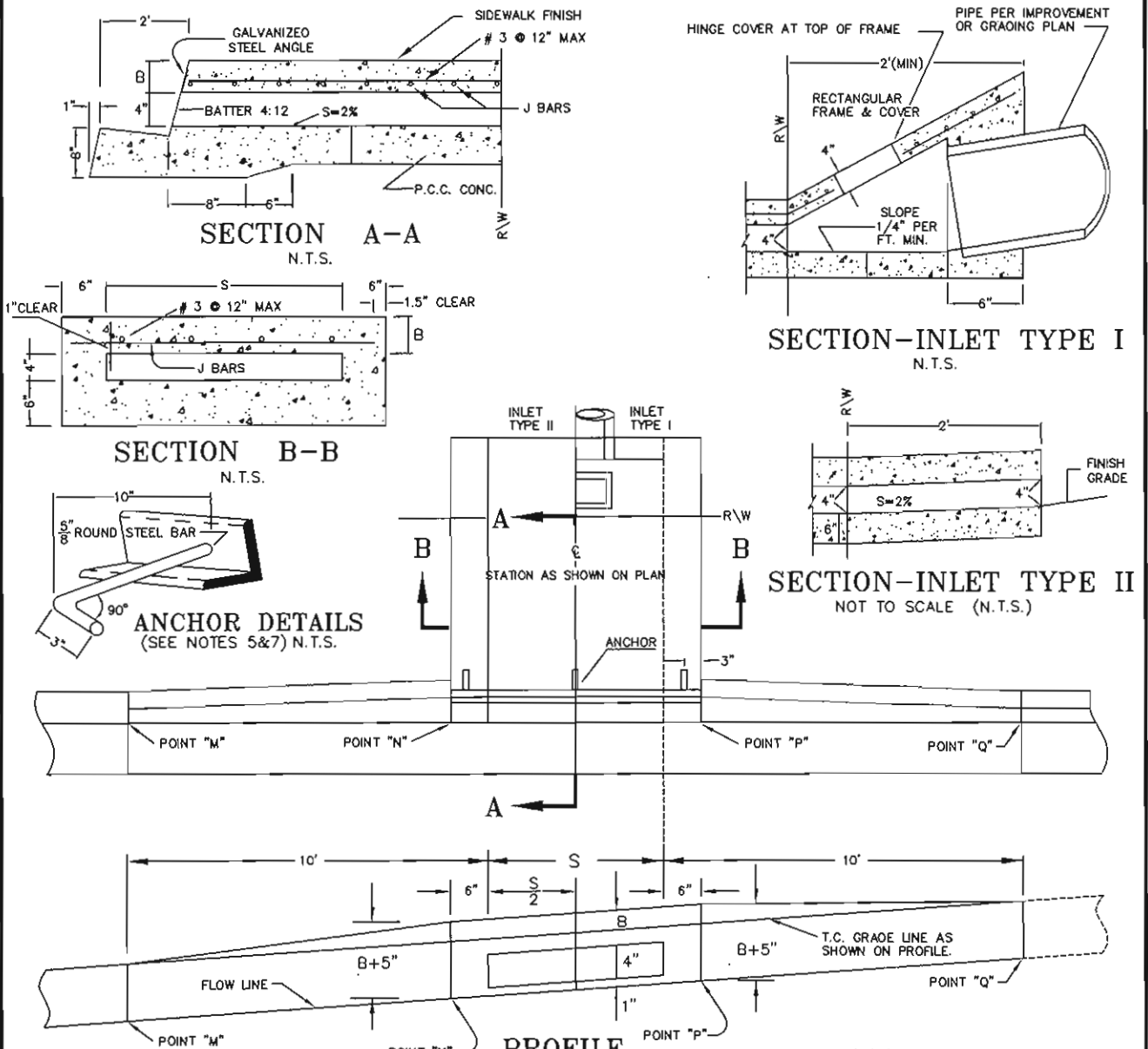


NO.	REVISIONS	APPROVED	DATE



NOTES:

- FLOOR OF BOX TO BE TROWELED SMOOTH.
- WHEN THE TOE OF SLOPE IS WITHIN THE R\W, INLET TYPE I BEGINS AT THE TOE RATHER THAN AT THE R\W LINE.
- FOR OPEN DITCH APPROACH (TYPE II) THE 2' EXTENSION IS NOT REQUIRED WHEN THE BACK OF WALK IS 2' OR MORE FROM THE R\W LINE.
- TOP OF INLET STRUCTURE (TYPE I&II) TO BE FLUSH WITH ADJACENT SURFACE WHERE PRACTICABLE.
- A HEADED STEEL STUD 5/8" x 6 3/8" WITH HEAD D=1" ATTACHED BY A FULL PENETRATION BUTT WELD MAY BE USED AS AN ALTERNATE ANCHOR.
- NORMAL CURB FACE AT POINT M AND Q; 8+5" AT POINT N AND P.
- THE 3" LEG OF THE INTERIOR ANCHORS SHALL BE PARALLEL TO THE TOP OF SIDEWALK.

STEEL LIST

S	B	GALVANIZED STEEL ANGLE	NO. ANCHORS	J BAR (ASTM-A615)		
				SIZE	SPACING	LENGTH
1'-0"	3"	2 1/2" x 2 x 3/8"	2	#3	7"	1'-9"
1'-6"	3"	"	2	#3	7"	2'-3"
2'-0"	3"	"	2	#3	7"	2'-9"
2'-6"	3"	"	2	#3	7"	3'-3"
3'-0"	3"	"	3	#3	7"	3'-9"
3'-6"	3"	"	3	#3	6"	4'-3"
4'-0"	3"	"	3	#3	5"	4'-9"
4'-6"	4"	3 1/2" x 3 x 1/2"	3	#3	6 1/2"	5'-3"
5'-0"	4"	"	3	#3	5"	5'-9"
5'-6"	4"	"	3	#3	4"	6'-3"
6'-0"	4"	"	3	#3	3 1/2"	6'-9"

<p>CITY OF PALM SPRINGS PUBLIC WORKS & ENGINEERING DEPARTMENT</p>	<p>APPROVED: DATE: 12/16/01 28931</p>
<p>TYPE I AND II CURB INLET</p>	<p>CITY ENGINEER R.C.E. DRAWN BY: S.H.K. FILE NO. STANDARDS CHECKED BY: M.V.H. DWG. NO. 705</p>