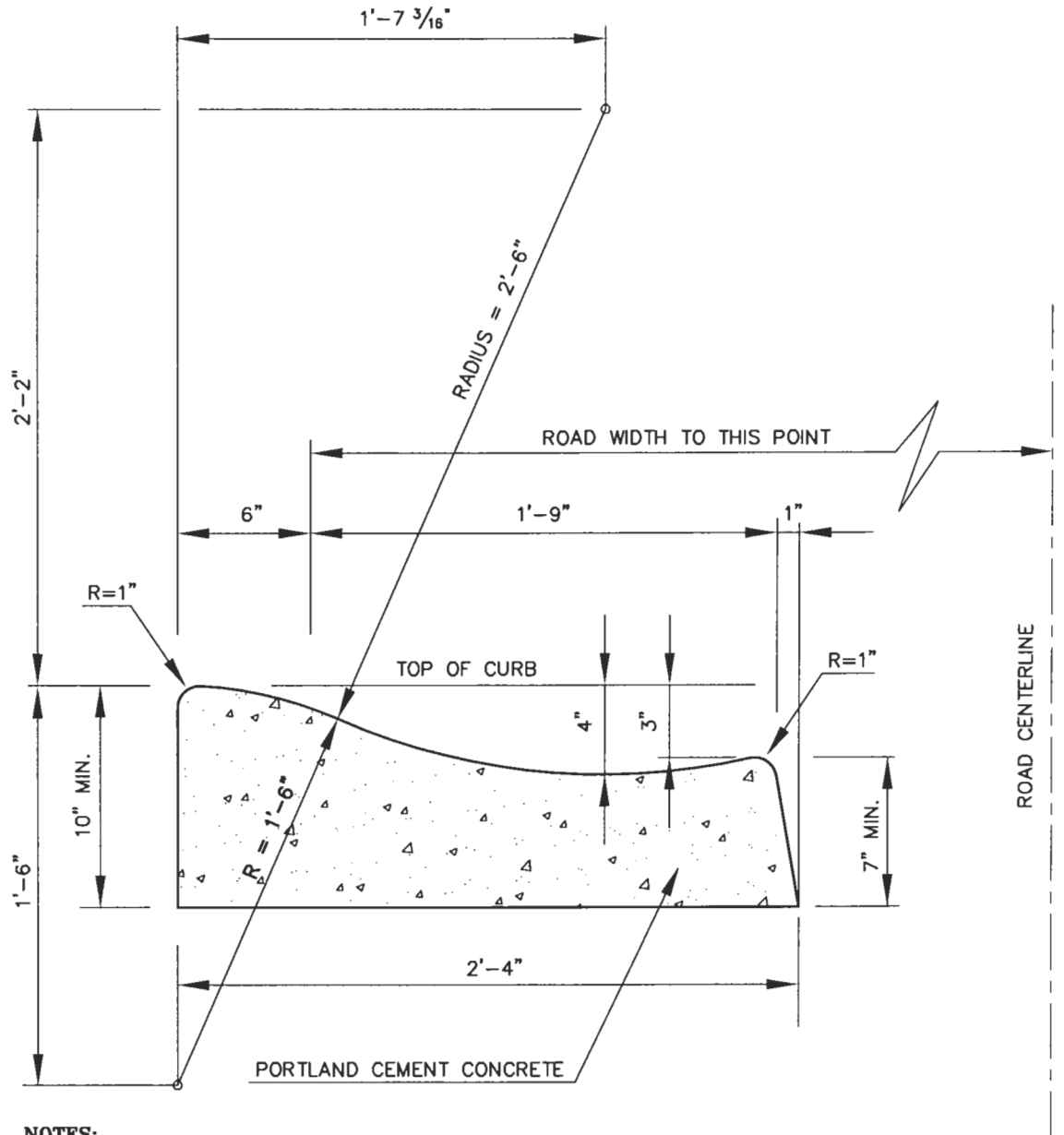


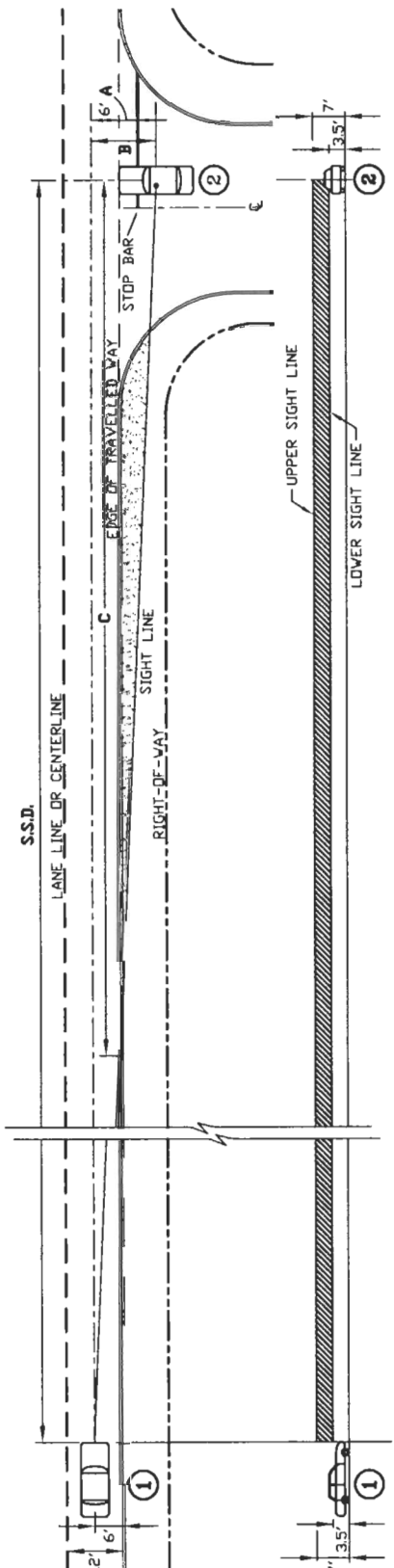
NO.	REVISIONS	APPROVED	DATE



**NOTES:**

1. MINIMUM PERMISSIBLE GRADE IS 0.50%, UNLESS SPECIFIC APPROVAL IS GIVEN BY THE CITY ENGINEER PRIOR TO DESIGN
2. THE CURB'S VOLUME IS = 1.42 CF./LF.; 1 CU.YD. = 19 LF.
3. SEE C.P.S. STD. DWG. NO. 110 FOR PAVEMENT STRUCTURAL SECTION.
4. PORTLAND CEMENT CONCRETE SHALL BE 560-C-3250 CONCRETE (6 SACK) MIN. IN ACCORDANCE WITH STANDARD SPECIFICATIONS FOR PUBLIC WORKS CONSTRUCTION, LATEST EDITION.

<b>CITY OF PALM SPRINGS</b> PUBLIC WORKS & ENGINEERING DEPARTMENT	APPROVED: <i>[Signature]</i>	DATE: <i>1/30/08</i>
	CITY ENGINEER	28931
<b>ROLLED CURB</b>	DRAWN BY: G.F.F.	FILE NO. STANDARDS
	CHECKED BY: M.L.F.	DWG. NO. <b>202</b>



DESIGN SPEED (mph)	30	45	50	55
S.S.D. (ft)	330	495	550	605
C (ft.) = SET-BACK	189	283	315	346

**LEGEND**

LIMITS OF VERTICAL SIGHT ZONE.

LIMITS OF HORIZONTAL SIGHT ZONE.

S.S.D.= STOPPING SIGHT DISTANCE - BASED ON 7.5 SECOND CRITERIA (CALTRANS HIGHWAY DESIGN MANUAL - INDEX 405.1)

SSD = 7.5 x 1.466 x DESIGN SPEED

A = DISTANCE FROM FACE OF CURB TO STOP BAR.

B = DISTANCE FROM CENTERLINE OF VEHICLE ① TO EYE OF VEHICLE ② DRIVER. VEHICLE ② DRIVER'S EYE IS ASSUMED TO BE 8' BEHIND THE FRONT OF VEHICLE (B=14'). HEIGHT OF EYE = 3.5' LOWER LIMIT AND 7' UPPER LIMIT.

C = SETBACK FROM INTERSECTION OF SIGHT LINE AND CURB FACE.

**NOTES:**

1. THERE SHALL BE NO SIGHT OBSTRUCTIONS IN EITHER HORIZONTAL OR VERTICAL SIGHT ZONES. SIGHT DISTANCES OBSTRUCTIONS ARE OBJECTS THAT MAY BLOCK THE VIEW OF MOTORISTS INCLUDING UTILITY VENTS, HILLS, WALLS, SIGNS, STREET FURNITURE, MATURE LANDSCAPING, HORIZONTAL AND VERTICAL ROAD CURVATURES, ETC., IN THE COMBINED HORIZONTAL AND VERTICAL SIGHT ZONES.
2. WALLS SHALL BE STEPPED DOWN TO 3' MAXIMUM HEIGHT AND ANGLED AWAY FROM ULTIMATE PROPERTY LINE AT SIGHT ZONE.
3. ANYTHING IN THE SIGHT ZONE SHALL BE 3' HIGH OR LESS.
4. DRIVER EYE LEVEL = 3.5' LOWER LIMIT, AND 7' UPPER LIMIT.
5. AT INTERSECTIONS, FOR DISTANCE 'A' (STOP BAR LOCATION) SEE STD. DWG. NO. 625 (A=4' AT RAMPED CURB RETURN, OR A=17' AT NON-RAMPED CURB RETURN)
6. AT DRIVEWAYS, DISTANCE 'A' = 1' (NO STOP BAR).

**CITY OF PALM SPRINGS**  
PUBLIC WORKS & ENGINEERING DEPARTMENT

**SIGHT DISTANCE REQUIREMENTS  
AT DRIVEWAYS AND INTERSECTIONS**

APPROVED:	DATE:
CITY ENGINEER	28931 R.C.E.
DRAWN BY: G.F.F.	FILE NO. STANDARDS
CHECKED BY: M.V.H.	DWG. NO. 203