



CITY COUNCIL STAFF REPORT

DATE: July 6, 2011

CONSENT CALENDAR

SUBJECT: APPROVE CONSTRUCTION DRAWINGS FOR DEMUTH PARK COMMUNITY GARDEN ON CITY PROPERTY AT SOUTH SIDE OF THE DEMUTH PARK COMMUNITY CENTER LOCATED AT 3601 E. MESQUITE AVE

FROM: David H. Ready, City Manager

BY: Michele Mician, Manager, Office of Sustainability

SUMMARY:

This action is to approve the landscape and irrigation site plan for the Demuth Park Community Garden located on City property at 3601 East Mesquite Avenue.

RECOMMENDATION:

- 1) Approve site plan for the Demuth Park Community Garden at the Demuth Park Community Center; and
- 2) Direct staff to obtain bids for the project; and
- 3) Authorize the City Manager to execute all necessary documents.

STAFF ANALYSIS:

The Palm Springs Path to a Sustainable Community recommended a community garden pilot project as a key sustainability initiative. To initiate this task, staff members who serve on the internal City Green Team formed a subcommittee to compile ideas, develop conceptual design, facilitate public input and solicit construction drawings.

The Office of Sustainability procured the services of TKD Associates to develop a landscape and irrigation plan for the site and provide a complete set of construction drawings. The design was developed based on examples of community garden projects already completed within the Coachella Valley, community recommendations and the site available for development. The Demuth Park Community Center location was chosen based on demographics, community interest, site availability, and proximity to existing services such as lighting, restroom facilities and parking.

ITEM NO. 7.0.

At the April and May 2011 regular Commission meetings the Sustainability Commission reviewed the conceptual design for the Demuth Community Garden, provided positive feedback and requested that staff execute the project.

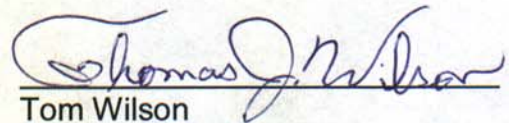
FISCAL IMPACT:

The project cost is estimated at \$80,000. The cost of construction and maintenance will be paid from two accounts. A portion of the project has been funded through a partnership and agreement with Veolia Water, Section 5.2 (v) which calls for an annual contribution of \$10,000 to WWTP Administration Public Community Garden account #420-6800-57021. The fund has \$50,000 available for the project.

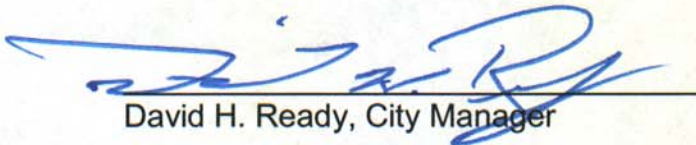
The remainder of the funding will be provided through the sustainability fund account #138-1270-58019. Annual maintenance will be funded using dollars available through the agreement with Veolia Water that calls for an ongoing annual contribution of \$10,000 for as long as Veolia Operating Services maintains an agreement with the City.



Michele Mician, Manager,
Office of Sustainability



Tom Wilson
Assistant City Manager



David H. Ready, City Manager

Attachments:
Site Plan
Project Materials List

PLANT LEGEND

Symbol	Quantity	Scientific Name	Common Name	Planting Size
⊗	1	Carissia G. Boxwood Beauty	Hybrid Palo Verde	36"-Box Std.
⊗	4	Prosopis chilensis Hybrid	Hybrid Chilean Haskapine	24"-Box Std.
⊗	1	Citrus Species	Citrus	24"-Box Std.

Symbol	Quantity	Scientific Name	Common Name	Planting Size
⊗	3	Chamaecyparis humilis	Madrievran Fan Palm	24"-Box Multi
⊗	3	Rosemary	Rosemary	5-Gal
⊗	3	Carissia G. Boxwood Beauty	Natal Palm	5-Gal
⊗	3	Carissia G. Boxwood Beauty	Carissia G. Boxwood Beauty	5-Gal

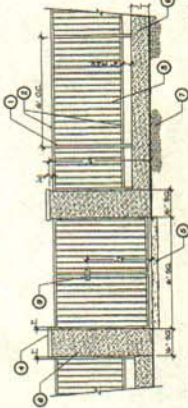
Symbol	Quantity	Scientific Name	Common Name	Planting Size
⊗	2	Bougainvillea 'B Karst'	Bougainvillea	5-Gal esp.
⊗	1	Calliandra inaequilatera	Pink Powder Fruit	5-Gal esp.
⊗	1	Bougainvillea 'B Karst'	Bougainvillea	5-Gal esp.
⊗	1	Bougainvillea 'B Karst'	Bougainvillea	5-Gal esp.

NOTE: CONTRACTOR TO VERIFY PLANT QUANTITIES BEFORE ORDERING MATERIAL.

EXISTING PLANT MATERIAL TO REMAIN

Symbol	Quantity	Scientific Name	Common Name	Notes
⊗	1	Olea Europaea	Olive Tree	To remain in place
⊗	3	washingtonia filifera	Calliandra Fan Palm	To remain in place

NOTE: CONTRACTOR TO TRIM TREE AND CUT DEAD BRANCH FROM PALMS TO EXPOSE A CLEAN PALM TRUNK.

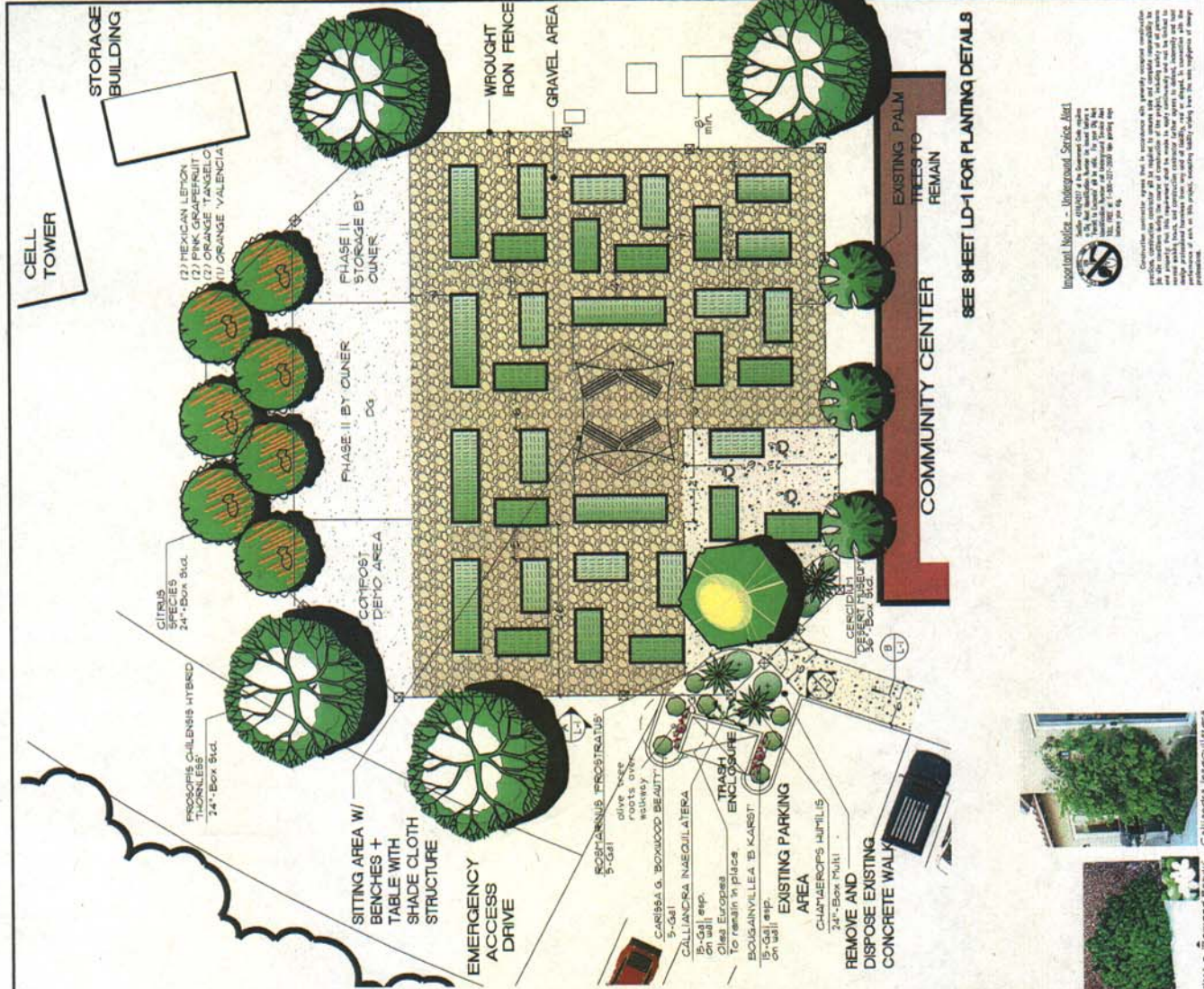


- 107 SQUARE STEEL TUBE POST & COL.
- 2X4 SQUARE STEEL TUBE PICKETS
- 2X4 SQUARE STEEL PICKETS (IF TRUNK EQUAL SPACINGS BETWEEN PICKETS)
- 7" THICK SLUMPED CAP COLOR TO BE FINISHED BY CONTRACTOR TO PROVIDE SHOP DRAWING FOR APPROVAL.
- CONTRACTOR TO PROVIDE SHOP DRAWING FOR APPROVAL.
- FINISH GRADE
- CONCRETE FOOTING PER CITY STANDARDS
- HEAVY DUTY SELF-CLOSING GATE HINGES
- 5% COMPACTED SUBGRADE

A-WROUGHT IRON FENCE + COLUMN DETAIL



Calliandra inaequilatera
Carissia G. Boxwood Beauty
Bougainvillea 'B Karst'
Prosopis chilensis 'Thomson's Green'
Citrus Species
Carissia G. Boxwood Beauty
Bougainvillea 'B Karst'
Chamaecyparis humilis



SEE SHEET LD-1 FOR PLANTING DETAILS

Important Notice - Underground Service Alert

Before any excavation or construction work is undertaken, the contractor shall contact the utility companies to determine the location of all underground utilities. The contractor shall be responsible for the safety of all workers and the public. The contractor shall be responsible for the safety of all workers and the public. The contractor shall be responsible for the safety of all workers and the public.

DATE: 5/13/13
 DRAWN BY: TSD
 CHECKED BY: TSD
 DATE: 5/13/13
 SCALE: 1/8" = 1'-0"

T.K.D. ASSOCIATES
 ARCHITECTS
 1000 W. 10TH AVENUE, SUITE 100
 DENVER, CO 80202
 PHONE: 303.733.1111
 FAX: 303.733.1112
 WWW: TKDA.COM

DEMUTH COMMU
CENTER CARI
PAUM SPRING
CAUF

LANDSCAPE ARCHITECTS
 1000 W. 10TH AVENUE, SUITE 100
 DENVER, CO 80202
 PHONE: 303.733.1111
 FAX: 303.733.1112
 WWW: TKDA.COM

PLANTING PLAN

REVISIONS

NO.	DATE	TYPE	DESCRIPTION
1	5/13/13	ADD	ADD PLANTING PLAN

DATE: 5/13/13
SCALE: 1/8" = 1'-0"

SHEET NO.: L-1
TOTAL SHEETS: 1